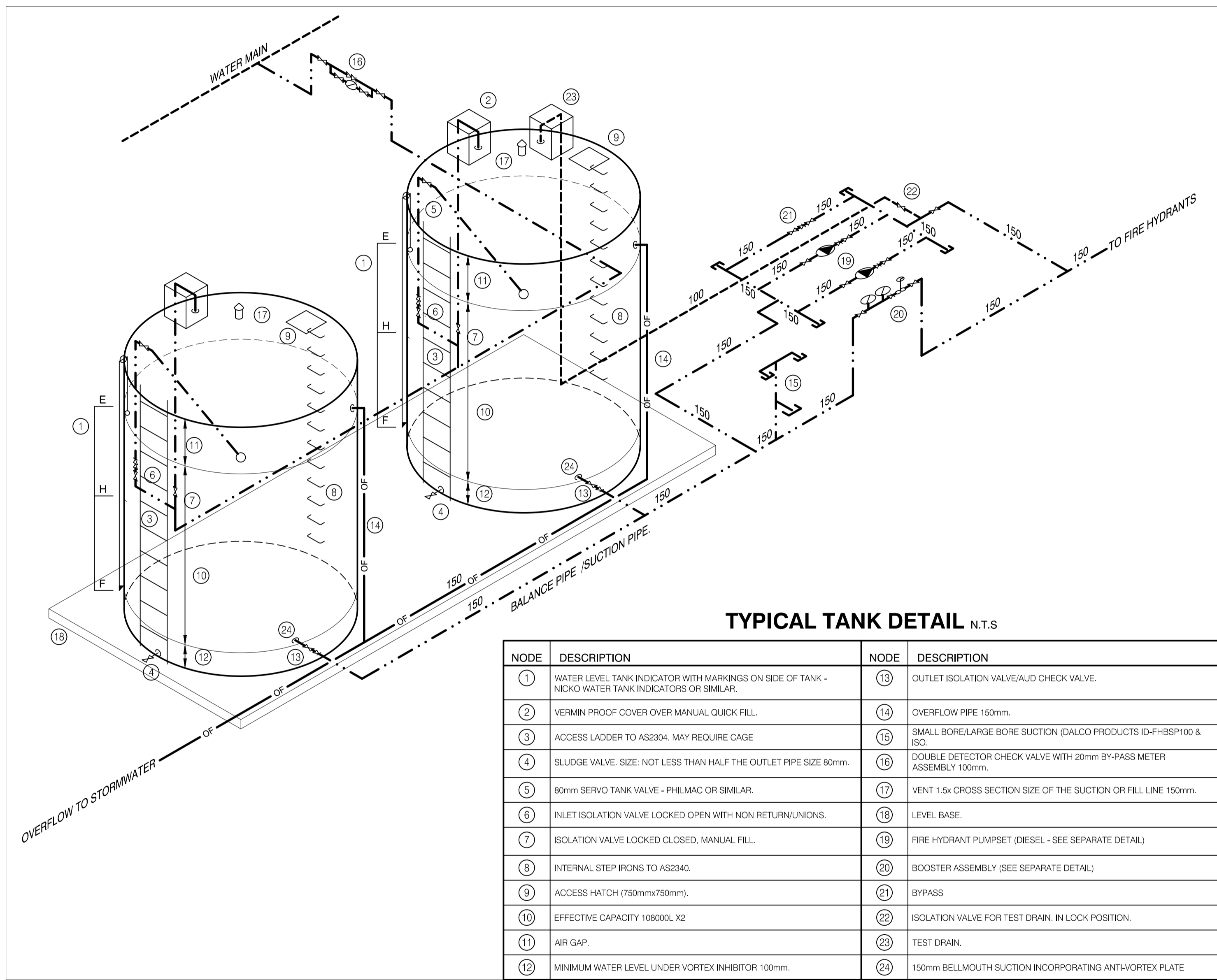
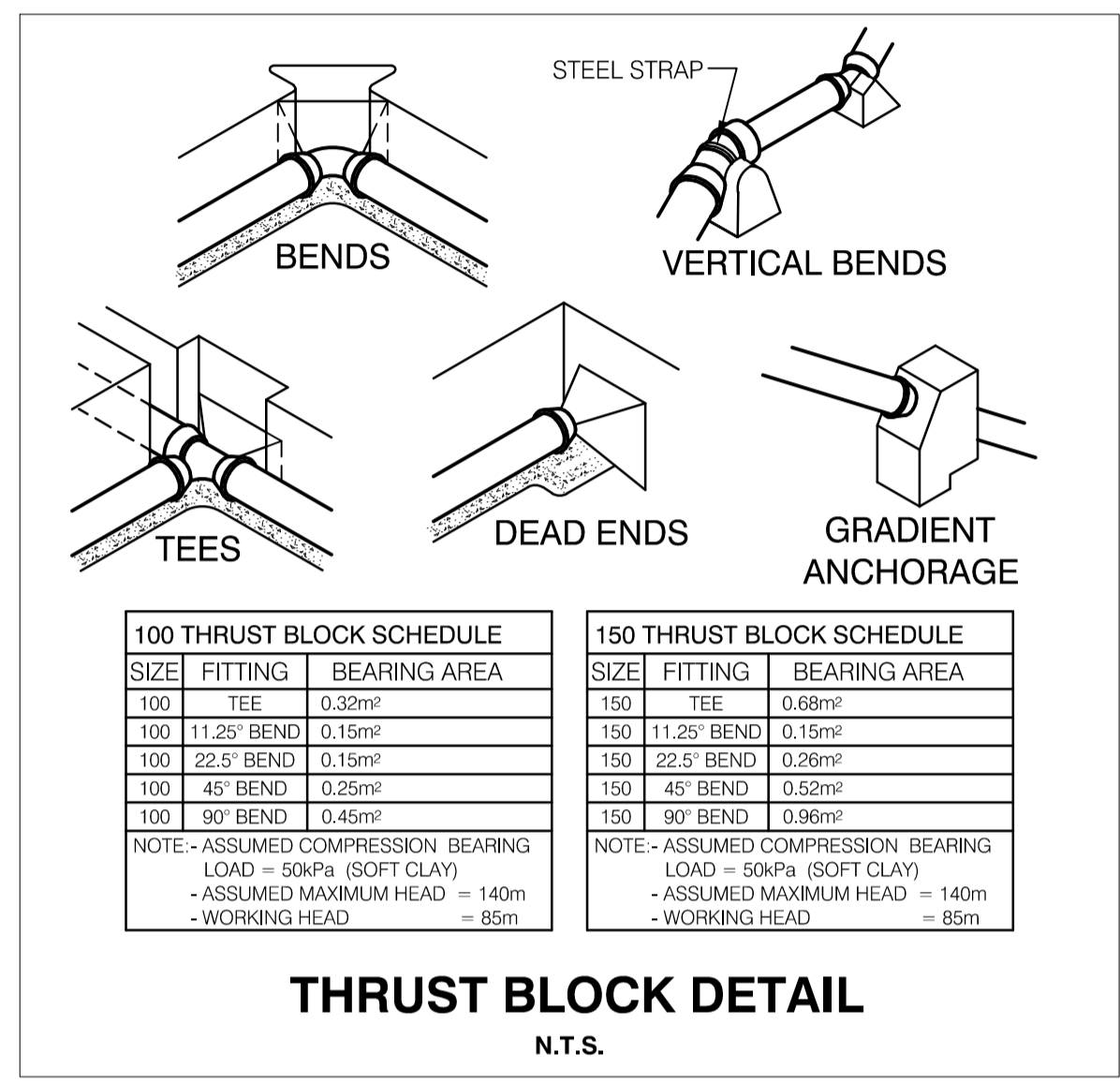


- DESIGN NOTES:
- ARTIFICIAL LIGHTING SHALL BE PROVIDED FOR PUMP HOUSE.
 - EMERGENCY LIGHTING COMPLYING AS2933.1 SHALL ALSO BE PROVIDED.
 - THE PUMP HOUSE SHALL BE ADEQUATELY VENTILATED AS PER THE STANDARD.
 - THE ELECTRICAL INSTALLATION ASSOCIATED WITH FIRE PUMP SYSTEM SHALL COMPLY WITH AS/NZS 3000 PROVISIONS INTENDED TO ACHIEVE A SECURE SUPPLY.
 - THE CONTRACTOR SHALL ALLOW FOR ELECTRICAL WORK ASSOCIATED WITH PUMP AND CONTROL PANEL.
 - ALL WORK SHALL COMPLY TO RELEVANT BCA, AS/NZS STANDARDS, & REGULATIONS.



NODE	DESCRIPTION	NODE	DESCRIPTION
1	WATER LEVEL TANK INDICATOR WITH MARKINGS ON SIDE OF TANK - NICKO WATER TANK INDICATORS OR SIMILAR.	13	OUTLET ISOLATION VALVE/AUD CHECK VALVE.
2	VERMIN PROOF COVER OVER MANUAL QUICK FILL.	14	OVERFLOW PIPE 150mm.
3	ACCESS LADDER TO AS2304. MAY REQUIRE CAGE	15	SMALL BORE/LARGE BORE SUCTION (DALCO PRODUCTS ID-FHBS100 & ISO.
4	SLUDGE VALVE. SIZE: NOT LESS THAN HALF THE OUTLET PIPE SIZE 80mm.	16	DOUBLE DETECTOR CHECK VALVE WITH 20mm BY-PASS METER ASSEMBLY 100mm.
5	80mm SERVO TANK VALVE - PHILMAC OR SIMILAR.	17	VENT 1.5x CROSS SECTION SIZE OF THE SUCTION OR FILL LINE 150mm.
6	INLET ISOLATION VALVE LOCKED OPEN WITH NON RETURN UNIONS.	18	LEVEL BASE.
7	ISOLATION VALVE LOCKED CLOSED. MANUAL FILL.	19	FIRE HYDRANT PUMPSET (DIESEL - SEE SEPARATE DETAIL)
8	INTERNAL STEP IRONS TO AS2340.	20	BOOSTER ASSEMBLY (SEE SEPARATE DETAIL)
9	ACCESS HATCH (750mmx750mm).	21	BYPASS
10	EFFECTIVE CAPACITY 108000L X2	22	ISOLATION VALVE FOR TEST DRAIN. IN LOCK POSITION.
11	AIR GAP.	23	TEST DRAIN.
12	MINIMUM WATER LEVEL UNDER VORTEX INHIBITOR 100mm.	24	150mm BELLMOUTH SUCTION INCORPORATING ANTI-VORTEX PLATE



0 25mm 50mm 100mm ON A1 ORIGINAL

Date	Issue	Reason for Issue
02.03.21	4	REVISED AS REQUESTED
15.01.21	3	REVISED AS REQUESTED
25.02.20	2	FOR REVIEW
24.10.19	1	TENDER ISSUE

THIS DRAWING IS NOT TO BE USED FOR ANY CONSTRUCTION PURPOSE UNLESS NOTED OTHERWISE IN THE ISSUE COLUMN. MARLINE NEWCASTLE PTY LTD. ACCEPT NO RESPONSIBILITY FOR ANY UNAUTHORISED USE OF DRAWINGS ISSUED ON A "INFORMATION AND DISCUSSION" ONLY BASIS.

THIS DRAWING IS COPYRIGHT AND IS THE PROPERTY OF MARLINE NEWCASTLE PTY LTD AND MUST NOT BE RETAINED, COPIED OR USED WITHOUT WRITTEN CONSENT OF MARLINE NEWCASTLE.

marline
 BUILDING SERVICES ENGINEERS
 MECHANICAL, ELECTRICAL, HYDRAULIC, FIRE, ENERGY

P (02) 4925 9300
 mail@marline.com.au
 www.marline.com.au
 ABN 49 612 456 381

MARLINE NEWCASTLE PTY LTD
 Unit F 56 Clyde Street
 Hamilton North NSW 2292
 ACN 612 456 381

Client: GILGANDRA SHIRE COUNCIL
 Architect: HAVENHAND & MATHER
 Project: SPECIAL CARE WING & ADMIN COOEE LODGE HOSTEL GILGANDRA

Drawn: S.T	Design: B.MAHER	Verify: J.ALLEN
Scale @ A1: 1:100	Date: NOV 2015	Job No. 8247
Discipline: HYDRAULIC SERVICES	Drawing Title: DETAIL SHEET 1	Issue: 4
		Drawing No. FH-102