



Live > Enjoy > Grow

GILGANDRA REGION DELIVERY PROGRAM AND OPERATIONAL PLAN 2024/25



ACKNOWLEDGEMENT OF COUNTRY.

Gilgandra is known as a “meeting place” between three Aboriginal nations - **Wiradjuri, Gamilaroi and Wailwan** - and we proudly continue to be a meeting place for family, friends, locals and visitors alike.

Gilgandra Shire Council acknowledges the traditional custodians of the land on which we live, work and play. We pay our respects to our Elders past, present and emerging, and thank them for the contribution they have made, and continue to make, in the cultural identity of our nation.





CONTENTS

01 INTRODUCTION	01
Community Strategic Plan >>>	
Delivery Program and Operational Plan.....	02
Our vision and values	03
Our themes	04
Integrated planning and reporting framework...	05
Council's Organisational Structure.....	06
02 ACTIONS TO DELIVER	07
Theme 1 Live.....	08-10
Theme 2 Enjoy	11-13
Theme 3 Grow	14
Theme 4 Lead	15-16
03 BUDGET FORECAST	17
Forecast budget results 2022/23-2024/25	18
Explanation of accounting terms	21
Major Capital Works.....	22
04 RATES AND CHARGES 2022/23	23
Statement of ordinary rates	24-31
05 FEES AND CHARGES 2022/23	32
Pricing Policy.....	33
Fee schedule	34-53

Live > Enjoy > Grow



01

INTRODUCTION

COMMUNITY STRATEGIC PLAN >>> DELIVERY PROGRAM AND OPERATIONAL PLAN

The Delivery Program and Operational Plan 2024/25 is based on the four key themes, *Live > Enjoy > Grow > Lead* and the outcomes and associated strategies, identified in the Community Strategic Plan. It outlines actions to be taken over this term of Council to progress the Community Strategic Plan.

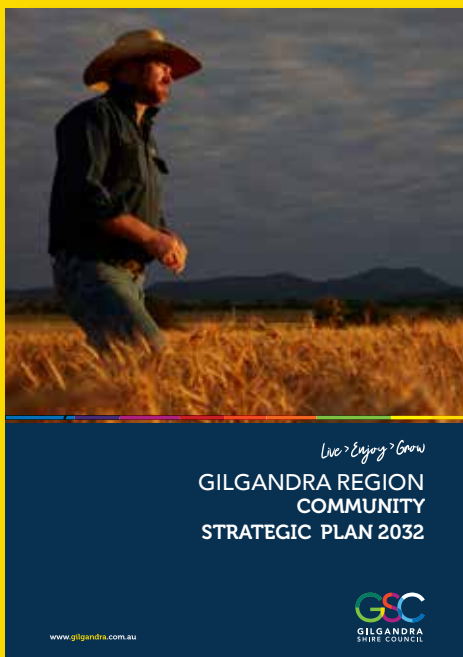
You can view the Community Strategic Plan on Council's website: www.gilgandra.nsw.gov.au.

The Community Strategic Plan gives a message from the Mayor and Councillors and confirms the vision and values for the future. It strategically aligns state, regional and local plans and strategies and outlines the resourcing strategy to achieve these. Underlying decision making principles are acknowledged, along with the feedback from community engagement and how Council will report.

Reports will be presented to Council on a quarterly basis, providing an update of progress with actions contained in the Operational Plan.

Council will report on Delivery Program achievements for the previous year in its Annual Report.

At the end of its term the outgoing Council will report to the community on its Delivery Program achievements in response to the Community Strategic Plan.



OUR VISION AND VALUES

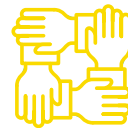
OUR VISION

A vibrant region to

Live > Enjoy > Grow

that is inclusive, resilient
and progressive.

OUR VALUES



INTEGRITY

- accountable
- open
- honest



LEADERSHIP

- proactive
- professional
- inclusive



VISION

- innovative
- strategic
- progressive

Our Themes...

live, enjoy, grow & lead.

Live

- > A community with improved roads and transport network
- > A community with inter-generational infrastructure and facilities
- > A community where services enhance liveability

Enjoy

- > An active and thriving community
- > A community that celebrates its culture and heritage
- > A region that offers a vibrant tourist destination experience

Grow

- > A region with resilient and innovative businesses
- > A region growing towards 5000
- > A region that capitalises on opportunities for economic growth

Lead

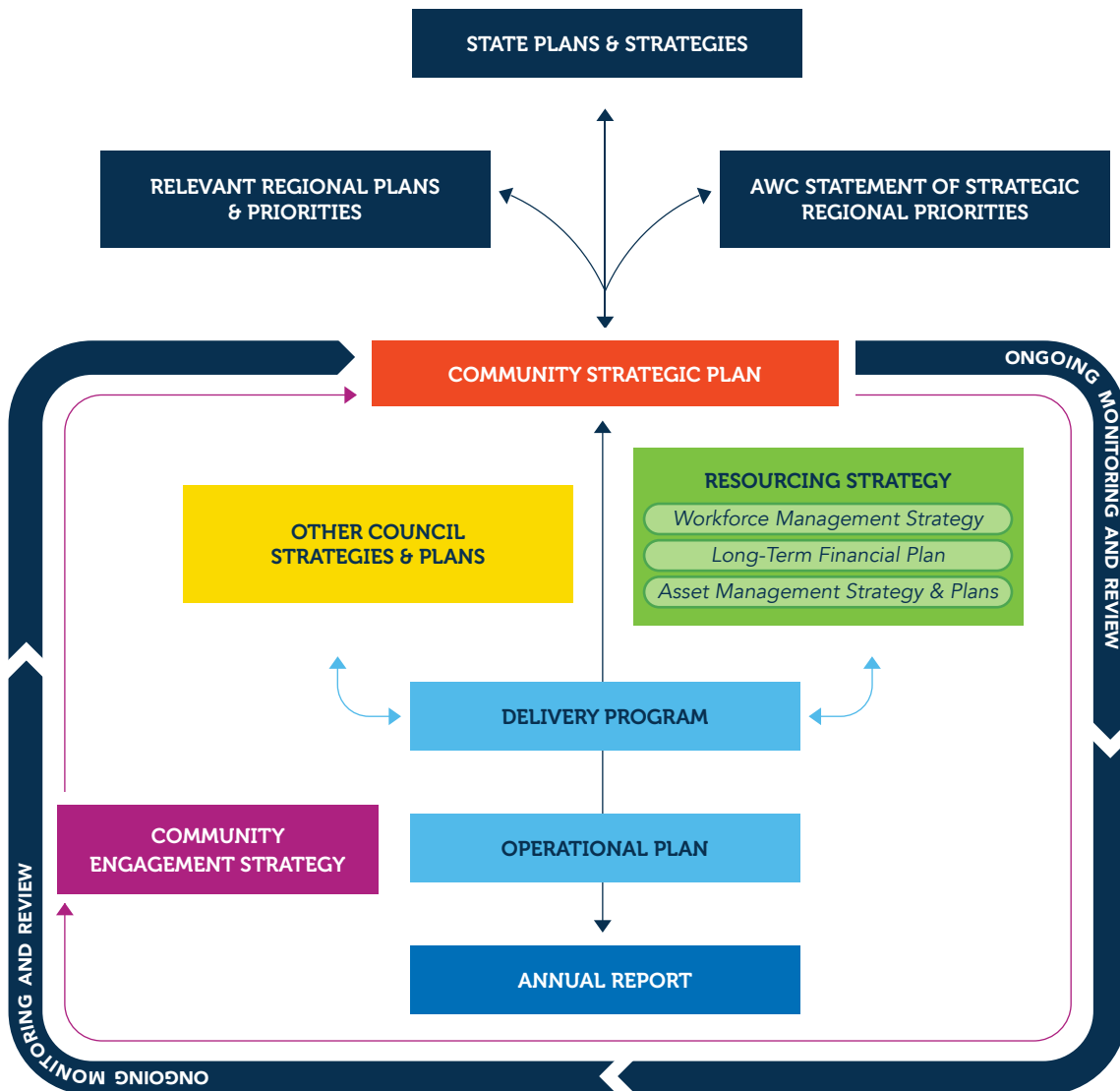
- > An innovative council that is an employer of choice within the community
- > A progressive council engaged with the community
- > A council valued by our community

INTEGRATED PLANNING AND REPORTING FRAMEWORK

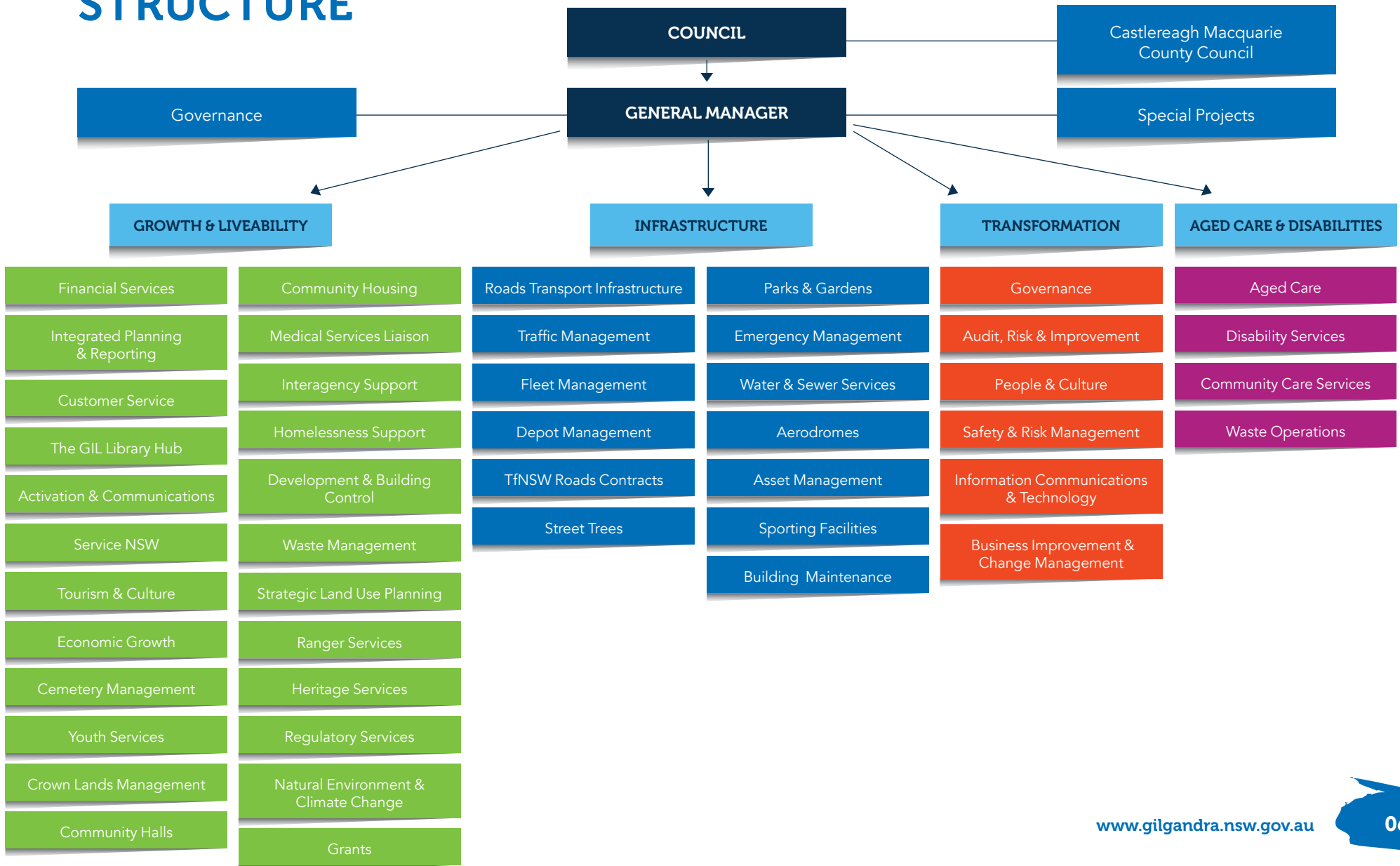
The Community Strategic plan forms the basis for all Council's programs, projects and plans for the next ten years.

Planning documents include:

- Delivery Program (term of Council)
- Operational Plan (1 year)
- Community Engagement Strategy
- Resourcing Strategy



COUNCIL'S ORGANISATIONAL STRUCTURE





02

ACTIONS TO
DELIVER

THEME 1 *Live*

OUTCOMES AND STRATEGIES

CSP OUTCOME

1.1 A community with improved roads and transport network

CSP STRATEGIES

DP AND OP ACTIONS

1.1.1	Manage works program for all funding sources in accordance with Council's Asset Management Plan, adopted Roads Hierarchy and Transport for NSW agreement	1.1.1.1	Deliver R2R program for local roads*
		1.1.1.2	Deliver NDRRA program for local and/or regional roads*
		1.1.1.3	Deliver Fixing Local Roads program*
		1.1.1.4	Deliver Block Grant program for regional roads*
		1.1.1.5	Deliver program funded by Additional Rural Roads Allocation*
		1.1.1.6	Deliver RMCC Ordered Works and Routine Maintenance within allocated budget*
		1.1.1.7	Deliver construction of Baronne Creek Floodway

CSP OUTCOME

1.2 A community with inter-generational infrastructure and facilities

CSP STRATEGIES

DP AND OP ACTIONS

1.2.1	Provide effective stormwater drainage, water supply and sewer connection services	1.2.1.1	Progress design and construction of a new Sewer Treatment Plant for Gilgandra*
		1.2.1.2	Deliver annual sewer relining program*
		1.2.1.4	Provide a potable Gilgandra town water supply that meets Australian Drinking Water standards*
1.2.2	Ensure public facilities are maintained, renewed and upgraded in line with Asset Management Plans	1.2.2.1	Maintain Gilgandra and Tooraweenah aerodromes to legislative standards*
		1.2.2.2	Ensure that cemeteries are maintained at a standard acceptable to the community*
		1.2.2.3	Review Asset Management Plans for Transport, Buildings, Recreation, Water & Sewer and Stormwater in line with revaluation cycles*
		1.2.2.4	Review the 10 year Plant Replacement Program annually*
		1.2.2.5	Deliver Light Industrial Subdivision in Naden Drive
1.2.2.5	Develop Plans of Management for Villages*		

* Current year

CSP OUTCOME

1.3 A community where services enhance liveability

CSP STRATEGIES

DP AND OP ACTIONS

1.3.1	Operate Gilgandra Lifestyles as a viable business unit, offering a range of quality aged and care options to meet industry standards and community needs	1.3.1.1	Evaluate 2022 Business Service Review of Gilgandra Lifestyles and implement appropriate actions/ recommendations for improvement*
		1.3.1.2	Provide quality care and meals to all residents of Cooee Lodge and Jack Towney Hostels in line with individual care plans*
		1.3.1.3	Provide a program of activities at Cooee Lodge and Jack Towney Hostel to improve self confidence, personal satisfaction, social, emotional and spiritual wellbeing of residents and support them to maintain relationships with families, carers and friends within the community*
		1.3.1.4	Deliver Home Care Packages (HCP) on a Consumer Directed Care (CDC) basis*
		1.3.1.5	Manage and maintain Cooee Lodge Retirement Village self care villas as an attractive and sustainable accommodation option*
		1.3.1.6	Provide food services, community transport and a range of social activities through Gilgandra Community Care*
		1.3.1.7	Meet the governance requirements applicable to Gilgandra Lifestyles*
		1.3.1.8	Undertake promotional activities and communications in accordance with the Gilgandra Lifestyles Marketing Strategy*
		1.3.1.9	Maintain links with aged care and community service networks and referral agencies*
1.3.2	Operate Orana Living as a viable business unit, offering quality accommodation and support services for people with disabilities	1.3.2.1	Provide a range of cost effective, quality accommodation services through Orana Living to meet all client needs (SDA/ SILS funded, drop in support or short term accommodation)*
		1.3.2.2	Develop and maintain programs with individualised goals to improve life skills, independence and employment opportunities for clients of Orana Living and support them to maintain relationships with families, carers and friends within the community*
		1.3.2.3	Review services provided by Orana Living and develop a Business Plan*
		1.3.2.4	Meet the governance requirements applicable to Orana Living*
		1.3.2.5	Review Orana Living Marketing Plan to actively promote services and communicate with stakeholders*
		1.3.2.6	Maintain links with disability and community service networks and referral agencies*
1.3.3	Operate Carlginda Enterprises as a viable business unit, providing supported employment and work-related training for people with disabilities	1.3.3.1	Maintain and increase employment and training opportunities for supported employees of Carlginda Enterprises*
		1.3.3.2	Meet the governance requirements of the supported employment service*
		1.3.3.3	Operate Material Recovery Facility (MRF) and public access to Gilgandra Waste Facility*
		1.3.3.4	Establish a viable tree nursery business*
		1.3.3.5	Operate a waste resource recovery shop from Gilgandra Waste Facility*

* Current year

1.3.4	Ensure availability and delivery of community services for current and future needs	1.3.4.1	Manage Gilgandra Waste Facility, waste collection contract for town and village kerbside pickup and encourage recycling in Gilgandra Region*
		1.3.4.2	Prepare tender documents for Domestic Waste & Recycling Collection service and undertake tender process
		1.3.4.3	Co-ordinate operations and activities at Gilgandra Youth Services*
		1.3.4.4	Operate a Homelessness and Housing service*
		1.3.4.5	Co-ordinate operations and activities at Gilgandra Fitness Centre and Gilgandra Swimming Pool*
		1.3.4.6	Promote Council's Community Services and activities at Gilgandra Youth Services, Gilgandra Fitness Centre, Gilgandra Swimming Pool and The GIL Library Hub*
		1.3.4.7	Provide animal shelter and ranger services*
		1.3.4.8	Support local and emergency rescue agencies in the delivery of their services
		1.3.4.9	Co-ordinate and encourage agency participation in regular interagency group meetings*
		1.3.4.10	Facilitate the development of a Childcare strategy for the Gilgandra Region in conjunction with key stakeholders*
1.3.5	Retain and expand health and medical services	1.3.5.1	Support the attraction and retention of general medical practitioners and allied services in the Gilgandra region*
		1.3.5.2	Manage and maintain Council's medical centres, dental surgery and accommodation*
		1.3.5.3	Facilitate the development of a health strategy for the Gilgandra Region in conjunction with key stakeholders*
		1.3.5.4	Explore the opportunity to relocate the dental surgery to the CBD
1.3.6	Encourage a resilient housing market that promotes choice and opportunity	1.3.6.1	Implement recommendations of the Gilgandra Housing Strategy to assess and develop a Residential Property Strategy and Management Plan for all Council owned properties
1.3.7	Encourage quality and variety of educational and training options for the Gilgandra Region	1.3.7.1	Support the delivery of high quality primary and secondary and tertiary education*
1.3.8	Facilitate enhanced communications for the Gilgandra Region	1.3.8.1	Pursue opportunities to address telecommunications black spots in Gilgandra Region*
		1.3.8.2	Optimise communications network in Gilgandra Region*

* Current year

THEME 2

Enjoy



OUTCOMES AND STRATEGIES

CSP OUTCOME

2.1 An active and thriving community

CSP STRATEGIES

DP AND OP ACTIONS

2.1.1	Promote and encourage a healthy lifestyle	2.1.1.1	Provide a range of recreational and sporting facilities which enable the community to pursue active recreational pursuits*
		2.1.1.2	Identify and pursue external funding opportunities for the Hunter Park Sporting and Recreational Precinct construction*
		2.1.1.3	Develop a Greening Strategy for Gilgandra Region's green spaces*
		2.1.1.4	Collaborate with user groups of sporting grounds and facilities to ensure their operational requirements are met*
		2.1.1.5	Review the Active Transport Strategy*
2.1.2	Encourage volunteerism that continues with the next generation	2.1.2.1	Recruit and support volunteer participation*
		2.1.2.2	Recognise the contribution volunteers make to Council and the community and provide regular communication*
2.1.3	Encourage youth participation and engagement in activities	2.1.3.1	Develop a Youth Strategy*
		2.1.3.2	Provide a range of activities for youth *
2.1.4	Encourage and support thriving community groups into the future	2.1.4.1	Support community groups with promotion of activities and assistance with applications for external funding*
		2.1.4.2	Support the maintenance and renewal of the Region's community halls and community group facilities*
2.1.5	Activate The GIL Library Hub as a vibrant community living room that generates social engagement and supports development in our business sector	2.1.5.1	Implement the Gilgandra Activation Blueprint to create the CBD Community Living Romm Hub: the GIL*
		2.1.5.2	Provide appropriate high quality, current collections, information services, programs, technology and community space for personal, business and community development*

* Current year

CSP OUTCOME

2.2 A community that celebrates its culture and heritage

CSP STRATEGIES

DP AND OP ACTIONS

2.2.1	Offer unique visitor and learning experiences in the Gilgandra Cultural Precinct	2.2.1.1	Implement the Gilgandra Cultural Precinct Strategic Plan to increase local community ownership and pride*
		2.2.1.2	Implement the Gilgandra Cultural Precinct Strategic Plan to recognise the GCP as a tourist destination*
		2.2.1.3	Implement the Gilgandra Cultural Precinct Strategic Plan to support and encourage local and regional creative and artistic expression*
		2.2.1.4	Implement the Gilgandra Cultural Precinct Strategic Plan to gain understanding and respect for local history and heritage*
2.2.2	Recognise, acknowledge and celebrate Gilgandra Region as a meeting place and champion inclusion so that all cultures are supported, valued and respected	2.2.2.1	Maintain positive working relationships with various representative cultural groups*
		2.2.2.2	Encourage participation of all cultures in activities and events*
2.2.3	Recognise and acknowledge the traditional custodians of the land and celebrate the cultural identity of Gilgandra Region	2.2.3.1	Include Acknowledgement of Country in Council publications and at meetings and events*
		2.2.3.2	Work with the Gilgandra Aboriginal Stakeholder group to implement the Meeting Place project with local Aboriginal stories, culture immersion and involvement*
2.2.4	Activate the Coo-ee Heritage Centre to offer cultural experiences, showcase regional artists and enhance the visitor economy	2.2.4.1	Provide a business unit for retail, hospitality and experience sales that showcase and support regional businesses*
		2.2.4.2	Operate the Coo-ee Heritage & Visitor Information Centre to maintain Level 1 Accreditation standards*
2.2.5	Actively preserve Gilgandra Region's cultural, heritage and natural assets	2.2.5.1	Review, update and implement Council's Heritage Strategy*
		2.2.5.2	Support local heritage projects to proactively conserve buildings and objects of local heritage value*
		2.2.5.3	Implement the Gilgandra Activation Blueprint to create gateway entrances - including review of the Gilgandra Heritage Precinct*

* Current year

CSP OUTCOME

2.3 A region that offers a vibrant tourist destination experience

CSP STRATEGIES

DP AND OP ACTIONS

2.3.1	Inspire events and festivals that celebrate the Gilgandra Region	2.3.1.1	Implement the Gilgandra Activation Blueprint to build on local and community events with the It's GREAT! Transformation project *
		2.3.1.2	Enhance the experience for locals and visitors with the Under the Gums event, and associated Goin' to Gil weekend initiatives, collaborating regionally to strive for a state significant event
2.3.2	Capitalise on regional tourism opportunities and collaborative initiatives	2.3.2.1	Implement projects from the Real Country Tourism Experience Strategy and Business Case in conjunction with Coonamble and Warrumbungle Councils for transformational ecotourism projects in the Region
		2.3.2.2	Develop a Gilgandra Region Destination Management Plan with marketing strategy that aligns with regional and state planning*
2.3.3	Provide an enhanced visitor driven experience to increase the visitor economy	2.3.3.1	Implement the Gilgandra Cultural Precinct Strategic Plan to increase visitation benefitting the regional and economic development of the Gilgandra Region*
		2.3.3.2	Implement the Gilgandra Activation Blueprint to connect the CBD tourist anchor and revitalised river corridor - including the Gilgandra Cultural Precinct transformation project*
		2.3.3.3	Establish and monitor a trial overnight parking area for fully self-contained recreational vehicles*
		2.3.3.4	Work with tourism providers, retail and accommodation to increase online presence, including online bookability, itinerary, purchases and communications

* Current year

THEME 3

Grow



OUTCOMES AND STRATEGIES

CSP OUTCOME

3.1 A Region with resilient and innovative businesses

CSP STRATEGIES

DP AND OP ACTIONS

3.1.1	Support existing and new businesses and encourage growth	3.1.1.1	Implement the Gilgandra Activation Blueprint to support local businesses to thrive - including Grow Gilgandra transformation projects*
		3.1.1.2	Implement the Gilgandra Activation Blueprint to strengthen industrial and agribusiness precincts*
		3.1.1.3	Lead implementation of priority projects identified in the Castlereagh Country Drought Resilience Plan as a joint project with Warrumbungle Shire Council

CSP OUTCOME

3.2 A Region growing Towards 5000

CSP STRATEGIES

DP AND OP ACTIONS

3.2.1	Attract and retain key skilled workers to Gilgandra Region	3.2.1.1	Coordinate the development of strategies and implementation projects associated with the Towards 5000 Vision
3.2.2	Develop appropriate land use strategies for sustainable development	3.2.2.1	Commence review Western Councils' Landuse Strategy and develop Gilgandra Regional Landuse Strategy*
		3.2.2.2	Commence review Council's Local Environmental Plan following finalisation of Gilgandra Regional Landuse Strategy*
		3.2.2.3	Coordinate Planning Proposal process to rezone land for industrial purposes*
		3.2.2.4	Facilitate the development of Industrial Land*
		3.2.2.5	Implement recommendation of the Gilgandra Housing Strategy to progress Aero Park subdivision*

CSP OUTCOME

3.3 A Region that capitalises on opportunities for economic growth

CSP STRATEGIES

DP AND OP ACTIONS

3.3.1	Chart an aspirational future for the Gilgandra Region	3.3.1.2	Implement the Gilgandra Activation Blueprint to activate key CBD spaces - including the beautification transformation projects*
3.3.2	Leverage Inland Rail construction and operations and new regional opportunities to create legacies for Gilgandra Region	3.3.2.3	Progress the Castlereagh River beautification and Real Country ecotourism infrastructure projects*

* Current year

THEME 4

Lead



OUTCOMES AND STRATEGIES

CSP OUTCOME	
4.1	An innovative Council that is an employer of choice within the community
CSP STRATEGIES	DP AND OP ACTIONS
4.1.1 Enable an engaged workforce with suitable skills, available in the right place at the right time	4.1.1.1 Implement the actions of the Workforce Management Strategy "Connect" by strengthening our capability to attract the right candidates in a highly competitive market*
	4.1.1.2 Implement the actions of the Workforce Management Strategy "Collaborate" by improved communication and business systems, maintaining high WHS standards and participating in regional initiatives*
	4.1.1.3 Implement the actions of the Workforce Management Strategy "Cultivate" by driving change, growing our skills base and diversity competence and succession planning*
	4.1.1.4 Conduct an Employee Wellbeing program
4.1.2 Improve culture, resourcing, process and governance practices	4.1.2.1 Implement recommendations of the Business Service Review in relation to ICT Strategy and Governance*
	4.1.2.2 Implement recommendations of the Business Service Review in relation to ICT Infrastructure*
	4.1.2.3 Implement recommendations of the Business Service Review in relation to ICT Applications and Data*
	4.1.2.4 Implement recommendations of the Business Service Review in relation to ICT Policy Processes*
	4.1.2.5 Implement recommendations of the Business Service Review in relation to ICT People and Culture*
CSP OUTCOME	
4.2	A progressive Council engaged with the community
CSP STRATEGIES	DP AND OP ACTIONS
4.2.1 Inform and empower community input into decision making	4.2.1.1 Implement the Community Engagement Strategy to inform, involve, empower, consult and collaborate with and empower stakeholders*
4.2.2 Provide consistent and responsive quality customer service	4.2.2.1 Provide customer centred service*
	4.2.2.2 Operate Service NSW to provide a one stop shop for access to a range of local, State and Federal Government services*

* Current year

CSP OUTCOME

4.3 A Council valued by its community

CSP STRATEGIES

DP AND OP ACTIONS

4.3.1	Implement and promote best practice governance	4.3.1.1	Ensure all governance targets and statutory requirements are met in line with the relevant Acts and Regulations and Council policy*
		4.3.1.2	Review the Business Continuity and Disaster Recovery Plan annually*
		4.3.1.3	Assess and process Development Applications, Complying Development Certificates, Construction Certificate Applications and Local Activity Approvals in a timely manner *
		4.3.1.4	Undertake regulatory inspections in line with legislative requirements*
		4.3.1.5	Develop Plans of Management for Crown and Council owned Lands*
4.3.2	Monitor and evaluate Council's strategic planning documents	4.3.2.1	Review Council's Integrated Plans in line with NSW State Government guidelines*
4.3.3	Ensure a financially sound Council that is responsible and sustainable	4.3.3.1	Prepare annual Budgets, Long Term Plan Reviews, Quarterly Budget Reviews and Annual Statements and place investments in line with legislative requirements and Council policy*
		4.3.3.2	Integrate key budget data with Council's Delivery Program and Operational Plan*
4.3.4	Maximise external funding opportunities to complement strategic plans	4.3.4.1	Actively pursue external funding opportunities for strategically aligned community and Council projects*
		4.3.4.2	Ensure reporting, acquittal and review processes are managed in line with external funding deeds and agreements*
4.3.5	Provide an advocacy role on behalf of the community	4.3.5.1	Represent community concerns in relation to government and non-government service delivery issues*
		4.3.5.2	Ensure Council attendance at relevant forums and that State and Federal Members are invited to local civic functions and community celebrations*
4.3.6	Be environmentally responsible in decision making	4.3.6.2	Implement Long Term Plan of Management for the Gilgandra Waste Facility to guide future waste resource requirements*
		4.3.6.3	Utilise renewable energy for new projects and convert existing buildings and facilities as opportunities arise*
		4.3.6.4	Monitor projects, issues and opportunities associated with the Orana Central West Renewable Energy Zone
4.3.7	Provide better access to Council information, services and facilities	4.3.7.1	Conduct annual audit, evaluation and review of the Disability Inclusion Action Plan (DIAP)*
		4.3.7.2	Support Councillors in their role by providing information regularly and training as required*

* Current year



03

BUDGET FORECAST

FORECAST BUDGET RESULTS FOR 2024/25

The below tables show the budget results by fund. The consolidated column is the results for Council as a whole. The table ultimately shows the net cash result for

Council for each year of the Delivery Program. An explanation for the accounting terms used appears below the tables.

Financial Year 2023/24	General Fund	Water Fund	Sewer Fund	Orana Living	Carlginda Enterprise	Coosee Lodge Retirement Village	Jack Towney Hostel	Consolidated
	\$	\$	\$	\$	\$	\$	\$	\$
Operating Income	19,077,782	1,607,658	1,733,052	6,317,986	616,539	7,196,685	1,676,375	38,226,077
Operating Expenditure	20,126,917	1,529,216	1,106,406	6,785,567	602,014	6,996,558	1,604,464	38,751,142
Operating Result before Capital	-1,049,135	78,442	626,646	-467,581	14,525	200,127	71,911	-525,065
Capital Income	6,684,412	0	0	0	0	0	0	6,684,412
Operating Result	5,635,277	78,442	626,646	-467,581	14,525	200,127	71,911	6,159,347
Depreciation Adjustment	4,653,949	604,547	361,790	116,580	13,847	327,748	15,397	6,093,858
Capital Expenditure	-15,362,323	-987,500	-651,500	-1,250,000	-10,000	-292,250	-10,000	-18,563,573
Net Cash Result	-5,073,097	-304,511	336,936	-1,601,001	18,372	235,625	77,308	-6,310,368

Breakup of Current Cash Result								
Net Cash Result	-5,073,097	-304,511	336,936	-1,601,001	18,372	235,625	77,308	-6,310,368
Reserves	1,644,242	250,000	0	1,200,000	0	0	0	3,094,242
Property Sales	922,675	0	0	0	0	0	0	922,675
New Loans	3,000,000	0	0	0	0	0	0	3,000,000
Loan Repayments	-835,663	-23,605	-18,884	0	0	-47,209	0	-925,361
Current Cash Result	-341,843	-78,116	318,052	-401,001	18,372	188,416	77,308	-218,812

Explanation of Accounting Terms used in the Forecast Results tables above	
Operating Expenditure	Operating expenditure is the component of the budget that relates to the on-going running expenses of the organisation, including salaries and wages, plant operating costs and expenses for maintenance and operational activities
Operating Income	Operating income is the component of the budget that relates to the on-going income received by the organisation. Operating Income includes rates and untied funds as well as fees and charges and annual charges for specific activities such as water, sewer, waste services and stormwater drainage. Annual Charges must be spent on the operations that they relate to e.g. income received from charges for waste services must be expended on waste services operations
Capital Income	Capital Income is income received from external organisations, usually in the form of tied grants from other levels of government, to be spent on specific capital works
Operating Result	The Operating Result is the difference between the operating expenditure and the operating income. The Operating Result may be a surplus result indicated by brackets or a deficit result
Depreciation Adjustment	Depreciation Adjustment takes out the effect of the “non-cash” accounting entry that is depreciation. This cash adjustment is made to allow the Net Cash Result of the budget to be calculated.
Capital Expenditure	This is the expenditure that is planned for the financial year to be spent on capital works. Capital works usually involve the renewal of assets or the building of new infrastructure
Net Cash Result	The Net Cash Result for the financial year (the difference between total revenue received and planned total expenditure) excluding depreciation and accruals. The net cash result may be a surplus result indicated by brackets or a deficit result. If the result is a deficit, the objective and/or theme uses more cash than it generates in the financial year
Reserves	These funds have been reserved for this specific purpose. Reserves can be generated from self-funding activities such as Airport or set aside for specific purposes in a previous financial year
Property Sales	These funds have been sourced from the sale of property owned and developed by Council.
New Loans	These funds were sourced via a loan for a specific purpose
Loan Repayments	These funds are used to repay the principal portion of Council loans.

major projects & programs.

Live

- > ADDITIONAL RURAL ROAD RENEWALS

\$295,204 2024/2025

- > NATIONAL PARK ROAD STAGE 1 SEAL BARONNE CREEK CROSSING

\$900,000 2024/2025

- > BARONNE CREEK CROSSING

\$1,250,000 2024/2025

- > UPGRADE NADEN DRIVE

\$506,706 2024/2025

- > SMART WATER METER INSTALLATION

\$500,000 2024/2025

- > WATER FLUORIDATION

\$130,000 2024/2025

- > UPGRADE SEWER MAINS

\$250,000 2024/2025

- > UPGRADE SEWER PUMP STATION

\$250,000 2024/2025

- > PLAN AND DESIGN NEW DISABILITY HOUSING

\$100,000 2024/2025

- > COOEE LODGE NURSE CALL SYSTEM INSTALLATION

\$150,000 2024/2025

Enjoy

- > UNDER THE GUMS & GOIN' TO GIL WEEKEND

\$235,000 2024/2025

- > GROW GILGANDRA - SHOP LOCAL - ITS GREAT PROGRAM

\$100,000 2024/2025

- > CARAVAN PARK AMENITIES UPGRADE

\$100,000 2024/2025

Grow

- > INDUSTRIAL LAND DEVELOPMENT

\$7,205,000 2024/2025

- > PLAN AND DESIGN WARREN ROAD MEDICAL PRECINCT

\$100,000 2024/2025



04

RATES AND CHARGES 2024/25

STATEMENT OF ORDINARY RATES

In developing its proposed rating structure for 2024/25 Council considered the following:

- The Statutory requirements of the Local Government Act 1993.
- The Federal Government declaring that ordinary rates are "GST Free".
- The allowable increase of ordinary rate income of 4.5% as determined by the Independent Pricing and Regulatory Tribunal (IPART).
- That Council has a catch up of \$5,537 from 2023/24 and that this amount must be allowed for when calculating Council's total permissible income for 2024/25.
- Maintaining the existing structure of the rate, being Ad Valorem and Minimum rating.
- If the Minimum amounts of rates should be increased, and if so by what amount.

ORDINARY RATES

Council proposes to increase the ordinary rate income by 4.5% being the allowable rate pegging increase. This equates to total ordinary rate income of \$5,927,291 (allowing for the 2023/24 catch up) calculated on current figures. **The details of this proposal are outlined in Table 1.**

TABLE 1: (4.5% INCREASE IN GENERAL RATE INCOME)

CATEGORY	Assess on Cents in \$	Rate	Rate	Assess on Min	Minimum	Amount	Total
Farmland	773	0.46544	\$4,513,463	49	\$650.90	\$31,894	\$4,545,357
Res-Gilgandra	171	1.7242	\$168,582	886	\$736.80	\$652,805	\$821,387
Residential	152	1.012178	\$166,210	158	\$664.30	\$104,959	\$271,169
Bus-Gilgandra	94	2.963995	\$176,690	62	\$744.80	\$46,178	\$222,867
Business	16	1.860549	\$39,866	40	\$666.10	\$26,644	\$66,510
	1206		\$ 5,064,811	1195		\$862,480	\$5,927,291

All rateable assessments are categorised into one of the following Rating Categories and subsequent Subcategories if applicable.

Category	Sub category
Farmland	
Residential	Residential-Gilgandra
Mining (Not Applicable)	Business-Gilgandra
Business	Business-Gilgandra

The following table summarises the criteria for categorisation. More detailed information may be obtained in the Local Government Act, 1993, or through Council's Rates Department.

Category/ Sub category	Summary of Criteria for Category	Section of L.G Act.
Farmland	All assessments engaged in farming that has a significant or substantial commercial purpose	515
Residential	All assessments used for residential purposes including rural residential assessments	516
Residential-Gilgandra	All assessments used for residential purposes within the township of Gilgandra	516
Business	All assessments used for commercial purposes (excluding farming)	518
Business-Gilgandra	All assessments used for commercial purposes within the township of Gilgandra	518

LAND VALUES

Council has been provided with land valuations by the Valuer General's Department and will be using these values to levy the 2024/25 rates. The base date of the land values is 1 July 2022.

INTEREST ON OVERDUE RATES

The Federal Government has advised that interest charged on overdue rates is a type of financial supply and will be "Input Taxed" therefore, GST does not apply.

Interest to be charged on overdue rates is regulated by the Office of Local Government. It is proposed to charge the maximum allowable rate which will be determined by the Office of Local Government. The Office of Local Government has advised that the interest rate to be charged in 2024/25 will be 9%. Interest will be calculated daily on the simple interest principle.

GILGANDRA WATER SUPPLY CHARGES

Council utilises a two part charging structure for the supply of water, being an access charge and a usage charge per kilolitre of water used.

Council introduced Best Practice Pricing in 2005/06 as directed by the State Government and it is proposed to continue with a two part charging structure under Best Practice Pricing guidelines.

In order to achieve the required income under Council's 30 year plan for water infrastructure and operating costs, it is proposed to increase both the usage charge and the access charge by 5% compared to the previous year.

PROPOSED 2024/25 STRUCTURE

Council has been provided with land valuations by the Valuer General's Department and will be using these values to levy the 2024/25 rates. The base date of the land values is 1 July 2022.

	Charge	Assess/ Kilolitres	Revenue
Access Charge - 20mm	\$362.00	1,260	\$456,120
Access Charge - 25mm	\$565.00	75	\$42,375
Access Charge - 32mm	\$927.00	9	\$8,343
Access Charge - 40mm	\$1,453.00	8	\$11,624
Access Charge - 50mm	\$2,270.00	7	\$15,890
Access Charge - 80mm	\$5,814.00	2	\$11,628
Access Charge - 100mm	\$9,083.00	3	\$27,249
Usage Charge *	\$1.61	536,502 kl	\$863,768
TOTAL REVENUE ESTIMATE			\$1,436,997

* Based on the average consumption over the last 10 years.

It is proposed that the access charges be levied according to the size of the water service connected or available to the property and that the usage charge be increased from \$1.53 per kilolitre to \$1.61 per kilolitre from the date of the last meter reading in 2023/24.

Utilising the proposed charging structure will realise estimated income of \$1,436,997 being an increase of \$71,739 from the 2023/24 charging structure.

The access charges will be made under Section 501 of the Local Government Act, 1993 and included on rate notices, and will be levied on all assessments that have access to Councils water supply in the Gilgandra township, excluding vacant Crown Land.

The usage charge will be raised under Section 502 of the Act and meters will be read twice a year in November and May with accounts issued during December and June.

The usage charge will be known as a "pay for use" charge as opposed to a "user pays" charge. This is to ensure that Council can recover the charges from the ratepayer / owner. Should the ratepayer wish to redistribute the charges to a tenant, an appropriate agreement should be made privately between the two parties.

TOORAWENAH WATER SUPPLY CHARGES

Council utilises a two part charging structure for water supply, being an access charge and a usage charge per kilolitre of water used.

Council introduced Best Practice Pricing in 2005/06 as directed by the State Government and it is proposed to continue with a two part charging structure currently in use.

It is proposed that the usage charge and the access charge be increased by 5% compared to the previous year.

The proposed structure for Tooraweenah Water Supply charges for 2024/25 is:

PROPOSED 2024/25 STRUCTURE

	Charge	Assess/ Kilolitres	Revenue
Access Charge	\$172.00	79	\$13,588
Usage Charge *	\$2.05	11,807 kl	\$24,204
TOTAL REVENUE ESTIMATE			\$37,792

* Based on the average consumption over the last 10 years.

The proposed usage charge will be raised under Section 502 of the Act and the proposed access charge for allotments within the village boundary will be raised under Section 501 of the Act. Accounts will be issued in December and June of each year.

SEWERAGE & TRADE WASTE SERVICES

In recent years, Council has utilised a charging structure based around an access charge according to estimated usage of the service.

Council introduced Best Practice Pricing in 2005/2006 as directed by the State Government and, it is proposed to continue with a two part charging structure comprised of an access charge and a usage charge (based on water usage) with the usage charge including Trade Waste charges.

In order to achieve the required income under Council's 30 year plan for sewer infrastructure and operating costs, it is proposed to increase both the usage and access charges by 7% compared to the previous year.

Service	Current Charges (PA)	Revenue
Trade Waste Usage Charge	\$4.37 x 8,600* kls	\$37,582*
Residential Usage Charge	\$615 x 1,012 assessments	\$622,380
Commercial and Non Rateable Usage Charge	\$2.76 x 71,734* kls	\$197,985
Access Charge - 20mm	\$492 x 1,245 assessments	\$612,540
Access Charge - 25mm	\$766 x 66 assessments	\$50,556
Access Charge - 32mm	\$1,254 x 8 assessments	\$10,032
Access Charge - 40mm	\$1,960 x 6 assessments	\$11,760
Access Charge - 50mm	\$3,048 x 6 assessments	\$18,288
Access Charge - 80mm	\$7,732 x 1 assessment	\$7,732
Access Charge - 100mm	\$12,076 x 3 assessments	\$36,228
TOTAL REVENUE ESTIMATE		\$1,612,083

* Based on the average water consumption over the last three years.

Utilising the proposed charging structure will realise estimated income of \$1,612,083 being an increase of \$115,059 from the 2023/24 rating year.

- The Residential Sewer Usage charge is proposed to increase from \$575 per assessment to \$615 per assessment.
- Trade Waste Usage Charges are proposed to increase from \$4.08 per kilolitre to \$4.37 per kilolitre.
- The Commercial Sewer Usage Charge is proposed to increase from \$2.58 per kilolitre to \$2.76 per kilolitre.

The access charges will be made under Section 501 of the Local Government Act, 1993 and included on rate notices, and will be levied on all assessments that have access to Councils sewerage supply system in the Gilgandra township, excluding vacant Crown Land.

The residential, commercial and trade waste usage charge will be raised under Section 502 of the Act. The residential usage charge will be included on rate notices and will be levied on all residential assessments that are connected to the sewerage supply system. The commercial and trade waste usage charge will be calculated according to a percentage of water used with water meters read twice a year in November and May and accounts issued during December and June.

The trade waste inspection charge will be levied once a year, after actual inspections are carried out by Council staff.

The usage charge will be known as a "pay for use" charge as opposed to a "user pays" charge. This is to ensure that Council can recover the charges from the ratepayer / owner. Should the ratepayer wish to redistribute the charges to a tenant, an appropriate agreement should be made privately between the two parties.

GENERAL COMMENT – WATER & SEWERAGE SERVICES.

With the introduction of a Goods and Services Tax (GST) on 1 July 2000, the Federal Government has advised that Water and Sewerage Service Charges are “GST Free”.

The following is an extract from the Department of Land and Water Conservation’s Water Supply, Sewerage and Trade Waste Pricing Guidelines:

“With increasing demands on the limited water resources of NSW, it is vital that we manage these resources in an efficient and sustainable manner. The planning and introduction of best-practice pricing structures is an essential step towards achieving these objectives.

As appropriate pricing is fundamental to effective management of water supply and sewerage businesses, the state government considers it important for each Local Water Utility (LWU) in NSW to set best-practice tariffs for water supply, sewerage and liquid trade waste. Such tariffs reflect the cost of providing the services and comply with the Independent Pricing and Regulatory Tribunal’s (IPART) Pricing Principles for Local Water Authorities 1996. The IPART Pricing Principles are consistent with the Council of Australian Governments’ (COAG) Strategic Framework for Water Reform 1994. All Australian governments agreed to comply with this framework by 1998 and such compliance is required under National Competition Policy.”

STORMWATER SERVICES

The commencement of the Local Government Amendment (Stormwater) Act 2005 on 13 April 2006 enabled Council to make or levy an annual charge for stormwater management services for urban land categorised as residential or business for which the service is available.

Council however cannot make or levy an annual charge for stormwater management services on vacant land, crown land or crown land held under lease for private purposes granted under the Housing Act 2001 or the Aboriginal Housing Act 1998.

Income raised from the implementation of this charge can be spent on capital projects and recurrent expenditure relating to new or additional stormwater management services to eligible land.

It is proposed that the charge remain at the \$25 per assessment limit set by the Local Government Amendment (Stormwater) Act 2005. The proposed structure for stormwater management service charge for 2024/25 is:

Category	Assess	Charge	Revenue
Residential - Gilgandra	925	\$25 / assessment	\$23,125
Business - Gilgandra	140	\$25 / assessment	\$3,500
TOTAL			\$26,625

Using the proposed structure will realise an estimated income of \$26,625 for 2024/25.

WASTE MANAGEMENT SERVICES

The Federal Government has advised that Waste Management Services levied under Sections 496 and 501 of the Local Government Act 1993 will be "GST Free".

DOMESTIC WASTE SERVICES

In accordance with Section 496 of the Local Government Act 1993, Council proposes to levy various annual charges for the provision of Domestic Waste Management (DWM) services on each parcel of residential land within Gilgandra, Tooraweenah and Armatree for which services are available (ie. within the Waste Services Contract area).

The proposed charging categories have been determined as follows:

- Domestic Waste Residence Charge - to be levied on all residential assessments within the Gilgandra service area that have a habitable residence built on it and would allow for one waste bin and one recycle bin pick up service per week.
- Domestic Waste Village Residence Charge – to be levied on all residential assessments within the Tooraweenah and Armatree service areas that have a habitable residence built on it and would allow for one waste bin and one recycle bin pick up service per week.
- Domestic Waste No Residence Charge - to be levied on all residential assessments within the Gilgandra service area that are either vacant land or have an uninhabitable residence built on it and would allow for no bin pick up service.
- Domestic Waste Village No Residence Charge - to be levied on all residential assessments within the Tooraweenah and Armatree service areas that are either vacant land or have an uninhabitable residence built on it and would allow for no bin pick up service.
- Domestic Waste Two Flats Charge - to be levied on all residential assessments within the Gilgandra service area that have two flats built on it and would allow for two bin pick up services per week.
- Domestic Waste Three Flats Charge - to be levied on all residential

assessments within the Gilgandra service area that have three flats built on it and would allow for three bin pick up services per week.

- Domestic Waste Four Flats Charge - to be levied on all residential assessments within the Gilgandra service area that have four flats built on it and would allow for four bin pick up services per week.
- Domestic Waste Five Flats Charge - to be levied on all residential assessments within the Gilgandra service area that have five flats built on it and would allow for five bin pick up services per week.
- Domestic Waste Six Flats Charge - to be levied on all residential assessments within the Gilgandra service area that have six flats built on it and would allow for six bin pick up services per week.
- Domestic Waste Seven Flats Charge - to be levied on all residential assessments within the Gilgandra service area that have seven flats built on it and would allow for seven bin pick up services per week.
- Domestic Waste Eight Flats Charge - to be levied on all residential assessments within the Gilgandra service area that have eight flats built on it and would allow for eight bin pick up services per week.
- Domestic Waste Nine Flats Charge - to be levied on all residential assessments within the Gilgandra service area that have nine flats built on it and would allow for nine bin pick up services per week.
- Domestic Waste Ten Flats Charge - to be levied on all residential assessments within the Gilgandra service area that have ten flats built on it and would allow for ten bin pick up services per week.

It is proposed to keep the Domestic Waste charging structure for the Gilgandra, Tooraweenah and Armatree service areas the same as the previous year, however, the charges will increase by 2% so as not to exceed the reasonable cost of providing such services.

This will raise an estimated \$533,989 for the 2024/25 year.

PROPOSED 2024/25 STRUCTURE

Charge	Assessments	Amount	Totals
Domestic Waste - Residence Charge	994	\$473	\$470,162
Domestic Waste – Village Residence	77	\$437	\$33,649
Domestic Waste - No Residence Charge	60	\$65	\$3,900
Domestic Waste – Village No Residence	36	\$63	\$2,268
Domestic Waste - 2 Flats Charge	7	\$594	\$4,158
Domestic Waste - 3 Flats Charge	4	\$867	\$3,468
Domestic Waste - 4 Flats Charge	5	\$1,131	\$5,655
Domestic Waste - 5 Flats Charge	4	\$1,423	\$5,692
Domestic Waste - 8 Flats Charge	1	\$2,249	\$2,249
Domestic Waste - 10 Flats Charge	1	\$2,788	\$2,788
TOTAL DOMESTIC WASTE INCOME			\$533,989

In determining the charge for domestic waste services, reference has been made to the cost factors for the services in Table 2.

OTHER WASTE SERVICES

In accordance with Section 501 of the Local Government Act 1993, Council proposes to levy various annual charges for the provision of Waste Management Services on each commercial property within Gilgandra, Tooraweenah and Armatree that has the service available (ie within the Waste Services Contract area) and, in accordance with Section 496 of the Local Government Act 1993, on non rateable properties that have requested the service.

The proposed charging categories have been determined as follows:

- Commercial Waste Non Business - to be levied on all commercial assessments within the Gilgandra service area that are either vacant land or are unable to be used as a business premises and would allow for no bin pick up service.
- Commercial Waste CBD - to be levied on all commercial assessments in Miller Street bounded by Court Street to the north and Warren Road to the south and would allow for two bin pick up services twice a week.
- Commercial Waste Other - to be levied on all commercial assessments within the Gilgandra service area other than those assessments categorised as Commercial Waste Non Business or Commercial Waste CBD and would allow for a two bin pick up service per week.
- Commercial Waste Villages – to be levied on all commercial assessments within the Tooraweenah and Armatree Service areas and would allow for a two bin pick up service per week.
- Non Rateable Waste One Service - to be levied on non rateable assessments that have requested one bin pick up service per week.
- Non Rateable Waste Two to Five Services - to be levied on non rateable assessments that have requested two to five bin pick up services per week.
- Non Rateable Waste Five to Ten Services - to be levied on non rateable assessments that have requested five to ten bin pick up services per week.
- Non Rateable Waste Over Ten Services - to be levied on non rateable assessments that have requested over ten bin pick up services per week.

It is proposed to keep the charging structure for Other Waste Services for the Gilgandra, Tooraweenah and Armatree service areas the same as the previous year, however, the charges will increase by 2%.

This will raise an estimated \$129,664 for the 2024/25 year.

PROPOSED 2024/25 STRUCTURE

Charge	Assessments	Amount	Totals
Commercial Waste Non Business	34	\$67	\$2,278
Commercial Waste CBD	46	\$762	\$35,052
Commercial Waste Other	77	\$633	\$48,741
Commercial Waste Villages	11	\$633	\$6,963
Non Rateable 1 Service	17	\$524	\$8,908
Non Rateable 2 to 5 Services	3	\$1,560	\$4,680
Non Rateable 6 to 10 Services	1	\$3,051	\$3,051
Non Rateable Over 10 Services	1	\$19,991	\$19,991
TOTAL OTHER WASTE INCOME			\$129,664

Should a commercial ratepayer require more services than those outlined, they will be required to negotiate directly with the Garbage Contractor for the provision of the extra services.

In determining the charge for other waste services, reference has been made to the cost factors for other services in Table 2.

RURAL WASTE CHARGES

In accordance with Section 501 of the Local Government Act 1993, Council proposes to levy an annual charge for the provision of Waste Management Services on each property outside the Gilgandra, Tooraweenah and Armatree service areas.

It is proposed to keep the charging structure for Rural Waste the same as the previous year, however, the charge will increase from \$22 per assessment to \$23 per assessment.

Charge	Assessments	Amount	Totals
Rural Waste Charge	1,047	\$23	24,081
RURAL WASTE TOTAL			\$24,081

In determining the charge for rural waste services, reference has been made to the cost factors for the services in Table 2.

RECYCLING SERVICES

Recycling Services provided are funded by the Domestic Waste Management Service Charge.



05

FEES AND CHARGES 2024/25



PRICING POLICY

The following details provide a statement of the types of fees proposed to be charged by Council and the amount of such fee. This is in accordance with Section 404(1) of the Local Government Act 1993. Also, included in the list of fees and charges is a fee type. The fee types are described as follows:

FEE TYPE A

This is a fee charged under relevant legislation. Council is unable to vary the amount of these fees. (s610)

FEE TYPE B

Is a fee generally an indicative fee which is recommended by the Local Government and Shires Association of NSW and Department of Local Government. This is done to maintain as much as possible a comparative fee for all Councils. It relates particularly to the supply of property and zoning certificates. (s609)

FEE TYPE C

These fees are for hire of Council premises and facilities. They have generally been reviewed by Council officers to gain the current market value for lease properties on the commercial market.

FEE TYPE D

These are fees and charges generally for documents and minor services provided by the Council. In most cases, the amount fixed represents a minimal fee and is designed to basically cover the cost of materials and other fixed costs in providing the information.

FEE TYPE E

This fee sets out to try and recover full cost of goods and services provided.

Please Note: All prices are stated inclusive of GST where applicable

FEES AND CHARGES SCHEDULE

Description of Fees and Charges	2024-25 \$	2023-24 \$	Income Number	Fee Type	GST (Y/N)
AERODROME					
Air Force - quarterly fee	17,875.00	17,875.00	191501	E	Y
BUILDING - OTHER					
Application for permission to occupy "temporary dwelling"	120.00	110.00	130101	E	Y
Critical Stage Inspections/Re-inspection fee for incomplete building works	120.00	110.00	180102	E	Y
<i>plus travel per hour if over 1/2 hour travel</i>	120.00	110.00	180102		
Statistical information compiled from files - per hour (minimum \$40.00)	120.00	110.00	130102	E	N
Swimming Pools					
Registration Fee where Council registers pool on behalf of owner	20.00	20.00	180101	E	Y
First Inspection Fee	120.00	110.00	180102	E	Y
Second Inspection Fee	120.00	110.00	180102	E	Y
Section 22 Application for Exemption	80.00	80.00	180102	E	Y
Fire					
Fire Safety Audits	120.00	110.00	180105	E	Y
<i>minimum charge \$25, then hourly fee</i>					
Fire Safety Certificates - Processing Fee	60.00	60.00	180105	E	Y
Food Shops					
Registration Fee	120.00	110.00	130101	E	N
Inspection Fee	120.00	110.00	130102	E	N
Re-Inspection Fee	120.00	110.00	130102	E	N
Re-Inspection/Improvement Notice	330.00	330.00	130102	E	N
BUSINESS PAPERS					
Agenda papers - per annum - hard copy	0.00	0.00	110006	D	Y
CEMETERIES					
Columbarium					
Niche reservation/purchase	230.00	225.00	160201	E	Y
Ashes interment in Niche	190.00	185.00	160201	E	Y
Lawn & Denominational Section					
Ashes, interment in existing plot (plaque additional cost)	190.00	185.00	160201	E	Y
Right of Burial/Purchase Plot	930.00	900.00	160201	E	Y
Interment - Weekdays	930.00	900.00	160201	E	Y
Interment - Saturdays and public holidays	1,390.00	1,350.00	160201	E	Y
Interment - Weekdays - still born or deceased infant	690.00	670.00	160201	E	Y
Interment - Saturdays and public holidays - still born or deceased infant	930.00	900.00	160201	E	Y
Reopening of grave for second interment	930.00	900.00	160201	E	Y
Reopening of grave for second interment - Saturdays and public holidays	1,390.00	1,350.00	160201	E	Y
Purchase of new gravesite for interment of cremated remains	930.00	900.00	160201	E	Y
CERTIFICATES					
Drainage Diagram	31.00	31.00	180103	E	N
<i>NB: Local plumbers do not pay this fee</i>					
Planning certificate					
s10.7 (2) certificate	62.00	62.00	160503	B	N
s10.7 (5) certificate	94.00	94.00	160503	B	N
Rating certificate (s 603, Local Government Act 1993)	95.00	95.00	110001	B	N
<i>NB: This fee is subject to change pending notification from Department Local Government</i>					

Description of Fees and Charges	2024-25 \$	2023-24 \$	Income Number	Fee Type	GST (Y/N)
COMMUNITY CARE FEES					
Community Transport					
Local Transport within Gilgandra Shire					
One Way Trip	8.00	8.00	150501	D	N
Return Trip	8.00	8.00	150501	D	N
Assisted Transport (shop, medical, etc)	12.00	12.00	150501	D	N
People living within 5km range return	11.00	11.00	150501	D	N
People living within 15km range return	16.00	16.00	150501	D	N
People living within 25km range return	21.00	21.00	150501	D	N
People living within 35km range return	35.00	35.00	150501	D	N
People living beyond 45km range return	50.00	50.00	150501	D	N
Group Transport - per person	3.00	3.00	150501	D	N
Community Bus Dubbo - 1st & 3rd Thursday	20.00	20.00	150501	D	N
Community Bus Tooraweenah 2nd & 4th Tues	15.00	15.00	150501	D	N
Transport Disadvantage - Taxi Vouchers book of 10	n/a	n/a	150505	D	N
Dubbo Medical Appointments	50.00	50.00	150501	D	N
Transport Multiple Clients per Vehicle	35.00	35.00	150501	D	N
Wheelchair Supported Clients - Load / Unload	10.00	10.00	150501	D	N
No Show / Late Cancellation Fee	20.00	20.00	150501	D	N
Home Care Package / NDIS Package & Residential					
Vehicle / Seat Availability - Local Service from \$11	POA	POA	150501	D	N
Vehicle / Seat Availability - Dubbo Service from \$85	POA	POA	150501	D	N
Vehicle Hire					
Community Transport Vehicle Hire (hourly)	POA	POA	150503	D	Y
Minimum 2 hour hire					
Day Hire (within the Shire only)	POA	POA	150503	D	Y
Day Hire (outside the Shire)	POA	POA	150503	D	Y
Non Profit Organisations from \$50	POA	POA	150503	D	Y
<i>Pick up and full fuel tank on return.</i>					
Social Support					
Supported Shopping	12.00	12.00	150401	D	N
Restaurant/Lunches - clients pay full cost.	3.00	3.00	150401	D	N
Social Home Visiting	5.00	5.00	150401	D	N
Phone Check - Per Week Day	2.00	2.00	150401	D	N
Phone Check - Weekend Per Day	5.00	5.00	150401	D	N
Meals on Wheels					
Daily Meal Package:					
Soup	3.50	3.50	150401	D	N
Hot Main Meal	8.50	8.50	150401	D	N
Sweets	3.50	3.50	150401	D	N
Juice	1.00	1.00	150401	D	N
Fruit of the Day	2.50	2.50	150401	D	N
Quiche only	5.00	5.00	150401	D	N
Quiche & Salad	7.00	7.00	150401	D	N
Salad & Meat	7.00	7.00	150401	D	N
Fruit Salad	5.50	5.50	150401	D	N
Sandwiches	5.50	5.50	150401	D	N
Trifle	4.80	4.80	150401	D	N
Frozen Meal Service	POA	POA	150401	D	N
Administration Fee					
Per delivery charge from outside services	7.50	7.50	150403	D	N

Description of Fees and Charges	2024-25 \$	2023-24 \$	Income Number	Fee Type	GST (Y/N)
COOEE LODGE					
Fees are dependant on type of accommodation resident is using					
Villa Units					
Price includes an ingoing contribution plus a weekly fee of 25% of the basic pension.			700102	A	Y
** Fees are subject to change twice yearly in March and September					
Legacy Units					
Price includes a weekly fee of 35% of the basic pension.			700101	A	Y
Hostel Units					
All residents pay a weekly fee of 85% of the basic pension plus, depending on assets and income, a means tested care fee and an accomodation payment.			800110	A	Y
For further details contact Hostel Management.					
Respite					
Per Day Charge	51.21	51.21	800110	A	Y
HCP - Home Care Package					
Price available on application.			750102	A	N
Caravan Bays - per week	7.70	7.70	700102	C	Y
DEVELOPMENT AND CONSTRUCTION (incl Certificates)					
Building Certificate (Division 6.7 EP&A Act)					
Residential - per dwelling unit	250.00	250.00	160503	A	N
Other less than 200 m ²	250.00	250.00	160503	A	N
200 - 2000 m ²	250.00	250.00	160503	A	N
(plus \$ per each additional m ²)	0.50	0.50	160503	A	N
more than 2000 m ²	1,165.00	1,165.00	160503	A	N
(plus \$ per each additional m ²)	0.08	0.08	160503	A	N
Copy of Building Certificate (Clause 261 EPA Reg)	15.00	15.00	180101	A	N
Certified copy of a document, map or plan - each (Clause 262 EPA Reg)	53.00	53.00	180105	A	Y
Compliance certificate (Critical Point Inspections, ie. precommencement, internal drainage, footings/piers, slab/piers, frame, wet areas, external drainage, stormwater, occupation)	120.00	110.00	180102	E	N
Certificate Section 9.3 EP&A Act (previous 121ZP(EPAA))	30.00	30.00	180105	A	N
Certificate 735(a) (LGA)	30.00	30.00	180104	A	N
Construction certificate - buildings					
Less than \$5,000 minimum	120.00	110.00	180101	A	Y
\$10,001 to \$100,000	\$80 for first \$5,000 plus 0.35% of the amount in excess of \$5,001			A	Y
\$100,001 to \$250,000	\$80 for first \$5,000 plus 0.35% of the amount in excess of \$5,001 plus 0.2% of the amount between \$100,000 and \$250,000			A	Y

Description of Fees and Charges		2024-25 \$	2023-24 \$	Income Number	Fee Type	GST (Y/N)
More than \$250,000	\$80 for first \$5,000 plus 0.35% of the amount in excess of \$5,001 plus 0.2% of the amount between \$100,000 and \$250,000 plus 0.1% for the amount in excess of \$250,000				A	N
Certificate s68 Moveable dwelling		120.00	110.00	130101	A	N
Amended Construction Certificate						
Minor amendment		40.00	40.00	180105	A	Y
Major amendment		110.00	110.00	180105	A	Y
Construction certificate - private certifier (lodgement and recording of private construction certificate)		36.00	36.00	180105	A	N
Occupation Certificate Interim/Final		120.00	110.00	180102	A	N
Where council staff does not hold the necessary certification for the assessment of a construction or complying development certificate and finds it necessary to obtain outside consulting services, then the applicant will be required to pay the additional costs associated therewith.		POA	POA	160501	E	Y
Where a development consent, complying development certificate or construction certificate was required for the erection of the building and no such consent or certificate was obtained, the fee to be applied is the total sum of each of the relevant building certificate fee, development application fee, complying development certificate fee.		POA	POA	160501	E	Y
DEVELOPMENT APPLICATIONS						
(for development involving the erection of a building other than a dwelling house, the carrying out of work or the demolition of a work or a building)						
Up to \$5000		129.00	129.00	160501	A	N
\$ 5000 - \$ 50,000		198.00	198.00	160501	A	N
(a) base fees plus (b) an additional \$3 for each \$1,000 (or part of \$1,000) the estimate exceeds \$5,000					A	N
\$ 50,000 - \$ 250,000		412.00	412.00	160501	A	N
(a) base fee plus (b) an additional \$3.64 for each \$1,000 (or part of \$1,000) by which the estimated cost exceeds \$50,000.					A	N
\$ 250,001 - \$ 500,000		1,356.00	1,356.00	160501	A	N
(a) base fee plus (b) an additional \$2.34 for each \$1,000 (or part of \$1,000) by which the estimated cost exceeds \$250,000.					A	N
\$ 500,001 - \$ 1,000,000		2,041.00	2,041.00	160501	A	N
(a) base fee plus (b) an additional \$1.64 for each \$1,000 (or part of \$1,000) by which the estimated cost exceeds \$500,000					A	N
\$ 1,000,001 - \$ 10,000,000		3,058.00	3,058.00	160501	A	N
(a) base fee plus (b) an additional \$1.44 for each \$1,000 (or part of \$1,000) by which the estimated cost exceeds \$1,000,000					A	N
more than \$ 10,000,000		18,565.00	18,565.00	160501	A	N
(a) base fee plus (b) an additional \$1.19 for each \$1,000 (or part of \$1,000) by which the estimated cost exceeds \$10,000,000					A	N
Advertisements						

Description of Fees and Charges	2024-25 \$	2023-24 \$	Income Number	Fee Type	GST (Y/N)
2.2 Development application for development for the purpose of 1 or more advertisements, but only if the fee under this item exceeds the fee that would be payable under 2.1, (a) 1 advertisement plus (b) for each additional advertisement \$93.00	333.00	333.00	160501		
2.3 Development application for development involving the erection of a dwelling house with an estimated cost of \$100,000 or less.	532.00	532.00			
Subdivisions					
2.4 Development application involving subdivision involving subdivision, other than strata subdivision, involving the opening of a public road- (a) base fee, plus (b) for each additional lot created by subdivision \$65.00	777.00	777.00	160501	A	N
2.5 Development application involving subdivision, other than strata subdivision, not involving the opening of a public road - (a) base fee, plus (b) for each additional lot created by subdivision \$53.00	386.00	386.00	160501	A	N
2.6 Development application involving strata subdivision - (a) base fee, plus (b) for each additional lot created by subdivision \$65.00	386.00	386.00	160501	A	N
2.7 Development application for development not involving the erection of a building, the carrying out of work, the subdivision of land or the demolition of a work or building	333.00	333.00	160501	A	N
Subdivision certificate	120.00	110.00	160501	A	N
Planning Reform Fee - State Government Charge of .64 cents per \$1,000			990628	A	N
Part 7 fees for reviews and appeals					
7.1 Application for review under the Act, section 8.3 that relates to a development application not involving the erection of a building, the carrying out of work or the demolition of a work or building	50% fee for original DA	50% fee for original DA	160501	A	N
7.2 Application for review under the Act, section 8.3 that relates to a development application involving the erection of a dwelling house with an estimated cost of \$100,000 or less	222.0000	222.0000	160501	A	N
7.3 Application for review under the Act, section 8.3 that relates to a development application, not referred to in item 7.1 and 7.2 for development with an estimate cost of :				A	N
Up to \$5000	64.00	64.00	160501	A	N
\$ 5001 - \$ 250,000	100.00	100.00	160501	A	N
(a) base fee plus (b) for each \$1,000, or part \$1,000, by which estimated cost exceeds \$5,000 - \$1.50				A	N
\$ 250,001 - \$ 500,000	585.00	585.00	160501	A	N
(a) base fee plus plus (b) for each \$1,000, or part \$1,000, by which estimated cost exceeds \$50,000 - \$0.85				A	N
\$ 500,001 - \$ 1 million	833.00	833.00	160501	A	N
(a) base fee plus (b) for each \$1,000, or part \$1,000, by which estimated cost exceeds \$500,000- \$0.50				A	N
\$ 1,000,001- \$ 10 million	1,154.00	1,154.00	160501	A	N
(a) base fee plus (b) for each \$1,000, or part \$1,000, by which estimated cost exceeds \$1 million- \$0.40				A	N
More than \$10,000,000	5,540.00	5,540.00	160501	A	N
(a) base fee plus (b) for each \$1,000, or part \$1,000, by which estimated cost exceeds \$10 million - \$0.27				A	N

Description of Fees and Charges	2024-25 \$	2023-24 \$	Income Number	Fee Type	GST (Y/N)
7.4 Application for review of decision to reject and not determine a development application under the Act, section 8.2 (1)© if the estimated cost of development is _			160501	A	N
(a) less than \$100,000	64.00	64.00	160501		
(b) \$100,000 - \$1 million	175.00	175.00	160501		
(c) more than \$1 million	292.00	292.00	160501		
Integrated Development					
As per agency nominated fee			160501	A	N
Modification of a consent for local development or State significant					
4.1 Application under s4.55 (1) EP&A Act	83.00	83.00	160501	A	N
4.2 Modification application - (a) under the Act, section 4.55(1A), or (b) under the Act, section 4.56(1) that involves, in the consent authority's opinion, minimal environmental impact	(a)\$754 (b)50%fee for original application	(a)\$754 (b)50%fee for original application	160501	A	N
4.3 Modification application under the Act, section 4.55(2) or 4.56(1) that does not, in the consent authority opinion, involve minimal environmental impact, if the fee for the original development application was - (a) less than 1 fee unit, or (b) 1 fee unit or more and the original development application did not involve the erection of a building, the carrying out of work or the demolition of a work or building	50% fee for original application	50% fee for original application	160501	A	N
4.4 Modification under the Act, section 4.55(2) or 4.56(1) that does not, in the consent authority's opinion, involve minimal environmental impact, if - (a) the fee for the original development application was 1 fee unit or more, and (b) the original development application involved the erection of a dwelling house with an estimated cost of \$100,000 or less	222.00	222.00	160501	A	N
4.5 Modification application under the Act, section 4.55(2) or 4.56(1) that does not, in the consent authority's opinion, involve minimal environmental impact, if the fee for the original application was 1 fee unit or more and the application relates to an original development application, other than an original development application specified in item 4.3 or 4.4, with an estimated cost of development of -			160501	A	N
Up to \$5000	64.00	64.00	160501	A	N
\$ 5001 - \$ 250,000	99.00	99.00	160501	A	N
(a) base fee plus (b) for each \$1,000, or part \$1,000, by which estimated cost exceeds \$5,000 - \$1.50				A	N
\$ 250,001 - \$ 500,000	585.00	585.00	160501	A	N
(a) base fee plus plus (b) for each \$1,000, or part \$1,000, by which estimated cost exceeds \$250,000- \$0.85				A	N
\$ 500,001 - \$ 1 million	833.00	833.00	160501	A	N
(a) base fee plus (b) for each \$1,000, or part \$1,000, by which estimated cost exceeds \$500,000- \$0.50				A	N
\$ 1,000,001- \$ 10 million	1,154.00	1,154.00	160501	A	N
(a) base fee plus (b) for each \$1,000, or part \$1,000, by which estimated cost exceeds \$1 million- \$0.40				A	N
More than \$10,000,000	5,540.00	5,540.00	160501	A	N
(a) base fee plus (b) for each \$1,000, or part \$1,000, by which estimated cost exceeds \$10 million - \$0.27				A	N
4.6 Additional fee for modification application if notice is required to be given under the Act, section 4.55(2) or 4.56 (1)	778.00	778.00	160501	A	N

Description of Fees and Charges	2024-25 \$	2023-24 \$	Income Number	Fee Type	GST (Y/N)
4.7 Additional fee for modification application that is accompanied by statement of qualified designer	889.00	889.00	160501	A	N
4.8 Additional fee for modification application that is referred to design review panel for advice	3,808.00	3,808.00	160501	A	N
4.9 Submitting modification application under the Act , section 4.55 (1A) or (2) on the NSW planning portal	40.00	40.00	160501	A	N
Part 9 Other Fees					
Miscellaneous applications - s68 LG Act (eg amusement devices)	120.00	110.00	130101	A	N
Complying Development Certificate Registration fee where Council is not approval authority	36.00	36.00	160501	A	N
Applications requiring referral to an Independent Accredited Certifier - Certifier's actual fee plus 3%			160501	A	N
9.1 Consideration of request for the Minister or Planning Secretary to refer matter to the Independent Planning Commission or a Sydney district planning panel under this regulation, section 262(1)	5,746.00	5,746.00	160501	A	N
9.2 Referral of matter by the Minister or Planning Secretary to the Independent Planning Commission or a Sydney district or regional planning panel under this Regulation section 262(1)	17,238.00	17,238.00	160501	A	N
9.3 Fees for application / certificate lodgement via the NSW Planning Portal	As per Environmental Planning & Assessment Regulation 2021- fees are in addition to Council fees & payable at time of application lodgement on portal.		160501	A	N
9.4 Application for planning certificate under the Act, section 10.7(1)	62.00	62.00	160501	A	N
9.5 Additional fee if planning certificate includes advice under the Act, section 10.7(5)	94.00	94.00	160501	A	N
9.6 Provision of certified copy of a document, map or plan under the Act	62.00	62.00	160501	A	N
9.7 Public hearing by Independent Planning Commission under the Act, section 2.9 (1)(d) - (a) base fee, plus (b) additional fee for estimated costs of hearing \$66,192.50	66,193.00	66,193.00	160501	A	N
s7.12 Developer Contributions					
Residential Development	Nil	Nil			
Commercial Development - \$500,000 or less	Nil	Nil			
Commercial Development - greater than \$500,000	0.50%	0.50%	160502	B	N
Planning Proposal (LEP)	POA	POA	160501	B	N
DISHONoured CHEQUES					
Returned Cheques	25.00	25.00	110006	D	Y
FOOTPATH RESTORATION					
These fees are for restoration of Councils footpaths after work being conducted by organisations or persons other than Council employees.					
Concrete per m2 - up to 5m2	271.00	271.00	191901	E	Y
- 6m2 and over	250.00	250.00	191901	E	Y
- Minimum fee	1,353.00	1,353.00	191901	E	Y
Pavers per m2 - By Quote			191901	E	Y
Residential Driveways - up to 5m2	271.00	271.00	191901	E	Y
- 6m2 and over	250.00	250.00	191901	E	Y
- Minimum fee	1,353.00	1,353.00	191901	E	Y

Description of Fees and Charges	2024-25 \$	2023-24 \$	Income Number	Fee Type	GST (Y/N)
Industrial Driveways - up to 5m2	303.00	303.00	191901	E	Y
- 6m2 and over	282.00	282.00	191901	E	Y
- Minimum fee	1,512.00	1,512.00	191901	E	Y
GOVERNMENT ACCESS CENTRE					
Black & White Photocopying					
White Paper A4 per page	0.35	0.35	150604	D	Y
Doublesided	0.50	0.50	150604	D	Y
A3 per page	0.55	0.55	150604	D	Y
Doublesided	0.85	0.85	150604	D	Y
Coloured Paper; additional 5c per page					
Paper Supplied; reduction of 2c per page					
Colour Photocopying					
White Paper A4 per page	1.20	1.20	150604	D	Y
Doublesided	1.80	1.80	150604	D	Y
A3 per page	1.60	1.60	150604	D	Y
Doublesided	2.50	2.50	150604	D	Y
Faxing/Emailing - Sending					
First Page	3.30	3.30	150604	D	Y
Additional Pages (per page)	1.20	1.20	150604	D	Y
Faxing/Emailing - Receiving					
Per page	0.35	0.35	150604	D	Y
Laminating					
Per A4 pouch	3.30	3.30	150604	D	Y
Per A3 pouch	4.60	4.60	150604	D	Y
Business Card	1.50	1.50	150604	D	Y
GOVERNMENT PUBLIC ACCESS (GIPA) ACT 2009					
Standard application - each	30.00	30.00	110006	A	N
Non-standard application - per hour	30.00	30.00	110006	A	N
GRAVEL					
Gravel Sales ex Pit (per cubic metre)	7.26	7.26	110103	E	N
GYMNASIUM FEES					
1 visit (includes gym and classes)	9.50	9.50	170901	C	Y
1 month (unlimited gym and class visits)	50.00	n/a	170901	C	Y
6 months (unlimited gym and class visits)	280.00	280.00	170901	C	Y
12 months (unlimited gym and class visits)	450.00	450.00	170901	C	Y
3 months (emergency services workers)	140.00	140.00	170901	C	Y
Block of 10 gym/class visits					
	85.00	85.00	170901	C	Y
10 Week Pass (classes only)					
	145.00	145.00	170901	C	Y
Keyless entry pass (non refundable)					
	50.00	50.00	170901	C	Y
Replacement keyless entry pass (non refundable)					
	50.00	50.00	170901	C	Y
Active Ageing Exercise Class for Senior Citizens					
Per Class	3.00	3.00	170904	C	Y

Description of Fees and Charges	2024-25 \$	2023-24 \$	Income Number	Fee Type	GST (Y/N)
HALL - GILGANDRA					
Booking Fee (to secure deposit - comes off total hire charge)	30.00	30.00	170401	C	Y
<i>Cleaning/Security Deposit - This deposit will be refunded where the hall and facilities are left in a clean and tidy state by no later than 10:am on the day following the function</i>					
Private function with alcohol available	880.00	880.00	990622	C	N
Public function with alcohol available	550.00	550.00	990622	C	N
Function with no alcohol	220.00	220.00	990622	C	N
Bond for Red Carpet - refundable if carpet is returned in clean condition	55.00	55.00	990622	C	N
Training Room - per day (includes use of kitchen)	110.00	110.00	170401	C	Y
Training Room - Non profit - up to 3 hours	66.00	66.00	170401	C	Y
Main Hall only - per day	192.50	192.50	170401	C	Y
Main Hall only - per day (local non-profit /community organisation/event)	126.50	126.50	170401	C	Y
Main Hall only - up to 3 hours (local non-profit/community organisation/event)	66.00	66.00	170401	C	Y
Main Hall only - for funeral service	126.50	126.50	170401	C	Y
Main Hall, Training Room & Kitchen - per day	258.50	258.50	170401	C	Y
Main Hall, Training Room & Kitchen - for funeral service	258.50	258.50	170401	C	Y
Main Hall, Training Room, Kitchen, Cool Room & Bar - per day	396.00	396.00	170401	C	Y
All facilities - per day (local non-profit/community organisation/event)	198.00	198.00	170401	C	Y
Large Functions (additional set up days) per day	198.00	198.00	170401	C	Y
Dance Practices (associated with function)	22.00	22.00	170401	C	Y
Table Hire (each) only older rectangle tables	13.20	13.20	170401	C	Y
Chair Hire (each)	2.75	2.75	170401	C	Y
Hire of Red Carpet	77.00	77.00	170401	C	Y
Metal Display Stands (each)	5.50	5.50	170401	C	Y
Replacement of any broken or damaged item - actual cost of item			170401	C	Y
Council Chambers					
Not for profit local organisations	0.00	0.00			
HALL - CURBAN					
Night time hire: eg. wedding, party, etc	500.00	500.00	CCH&TMC	C	N
<i>A bond of \$500 will apply and is payable before function.</i>					
Set Up / Clean Up Fee - day before or after event	50.00	50.00	CCH&TMC	C	N
Chair Hire (per chair)	5.00	5.00	CCH&TMC	C	N
Tablecloth Hire (per tablecloth) - cleaned & ironed	5.00	5.00	CCH&TMC	C	N
Tablecloth Hire (per tablecloth) - uncleaned	10.00	10.00	CCH&TMC	C	N
Hall Cleaning Charge	100.00	100.00	CCH&TMC	C	N
Commercial business - full day (4+ hrs)	300.00	300.00	CCH&TMC	C	N
Non commercial, local - full day (4+ hrs)	200.00	200.00	CCH&TMC	C	N
Night meeting only	40.00	40.00	CCH&TMC	C	N
Commercial business - half day (up to 4hrs)	150.00	150.00	CCH&TMC	C	N
Non commercial, local - half day (up to 4hrs)	100.00	100.00	CCH&TMC	C	N
Tennis Court Hire - plus kitchen & toilets (per day)	60.00	60.00	CCH&TMC	C	N
Tennis Court Hire - plus toilets only (per day)	35.00	35.00	CCH&TMC	C	N
Barbeque Hire (each per day)	10.00	10.00	CCH&TMC	C	N
Wooden Bench Seat Hire (per seat) - free if used onsite	5.00	5.00	CCH&TMC	C	N
HALL - TOORAWEEAH					
Large Function eg. wedding, party	150.00	150.00	THC	C	N
Meeting or Single Day Event	100.00	100.00	THC	C	N
Table Hire (each)	5.00	5.00	THC	C	N
Chair Hire (each)	1.00	1.00	THC	C	N

Description of Fees and Charges	2024-25 \$	2023-24 \$	Income Number	Fee Type	GST (Y/N)
IMPOUNDED ARTICLES - eg cars					
Conveyance of impounded article to pound/storage 28 days/disposal	450.00	450.00	180105	E	N
Notice advising the owner of an impounded item	0.00	0.00		E	N
Advertising of article/vehicle prior to sale, where necessary and when the owner not known	50.00	50.00	180105	E	N
IMPOUNDED STOCK					
Conveyance of impounded stock to pound or other approved site	150.00	150.00	180105	E	N
plus actual cost for droving/transporting					
Notice advising the owner of impounded stock	0.00	0.00			
Advertising of stock prior to sale, where necessary and when the owner not	0.00	0.00			
Release Fee - per head					
horses, cows, etc (first head)	60.00	60.00	180105	E	N
horses, cows, etc (subsequent head)	20.00	20.00	180105	E	N
sheep, goats, pigs (first head)	60.00	60.00	180105	E	N
sheep, goats, pigs (subsequent head)	15.00	15.00	180105	E	N
Sustenance and maintenance - per head/per day					
horses, asses, mules, cows, camels	25.00	25.00	180105	E	N
sheep, goats, pigs	2.00	2.00	180105	E	N
INSPECTION, LICENCE and REGISTRATION FEES					
Caravan Parks (per site)	120.00	110.00	130102	E	N
Premises of entertainment (excluding public halls)					
0 - 250 persons	0.00	0.00	130102	E	N
251 - 500 persons	0.00	0.00	130102	E	N
501 - 750 persons	0.00	0.00	130102	E	N
751 - 1000 persons	0.00	0.00	130102	E	N
1001 +	0.00	0.00	130102	E	N
Public halls			130102	E	Y
<i>Application fees for existing premises are the same as those above, based on capacity examination of existing buildings for initial entertainment licence, ie. initial inspection of plans, on site inspection and assessment of requirements.</i>				E	Y
Combined inspection - Schools (ie places of public entertainment and food shop)	120.00	110.00	130102	E	Y
Barber shops and hairdressers	120.00	110.00	130102	E	N
Beauty salons	120.00	110.00	130102	E	N
Boarding house, bed and breakfast establishment	120.00	110.00	130102	E	N
Food shops (initial inspection)	120.00	110.00	130102	E	N
plus travel per hour if over 1/2 hour travel	120.00	110.00	130102	E	N
Food shop (each inspection after the 2nd visit)			130102	E	N
Minor food shops	40.00	40.00	130102	E	N
Mobile vending facilities	120.00	110.00	130102	E	N
plus travel per hour if over 1/2 hour travel	120.00	110.00	130102	E	N
Skin penetration	120.00	110.00	130102	E	N
Water carters	120.00	110.00	130102	E	N
Water sampling - private (exclusive of water analysis costs)	POA	POA		E	Y
Regulation of Service Stations / Inspections	200.00	200.00	130102	E	N
KERB AND GUTTER					
These fees are for restoration of Council's kerb and gutter after work being conducted by organisations or persons other than Council employees.					
Concrete lineal per m2 - up to 5m2	467.00	446.00	191901	E	Y
- 6m2 and over	435.00	415.00	191901	E	Y
- Minimum fee	2,333.00	2,228.00	191901	E	Y
Residential Kerb and Gutter Layback					
Concrete lineal per m2	284.00	271.00	191901	E	Y
- Minimum fee	1,417.00	1,353.00	191901	E	Y
Industrial Kerb and Gutter Layback					
Concrete lineal per m2	317.00	303.00	191901	E	Y
- Minimum fee	1,583.00	1,512.00	191901	E	Y

Description of Fees and Charges	2024-25 \$	2023-24 \$	Income Number	Fee Type	GST (Y/N)
LIBRARY CHARGES					
Black & White Photocopying					
White Paper A4 per page	0.40	0.40	170201	D	Y
bulk	0.30	0.30	170201	D	Y
double sided	0.50	0.50	170201	D	Y
White Paper A3 per page	0.50	0.50	170201	D	Y
double sided	0.70	0.70	170201	D	Y
Scanning Images per image	1.00	1.00	170201	D	Y
Laminating A4 per page	3.30	3.30	170201	D	Y
Colour Printing from a PC A4 per page	3.00	3.00	170201	D	Y
Bulk Colour Printing A4 per page	1.00	1.00	170201	D	Y
Bulk Colour Printing A3 per page	6.00	6.00	170201	D	Y
Lost Membership Card	2.00	2.00	170201	D	Y
Lost/Damaged books - replacement cost					
Processing fee for lost or damaged item	5.50	5.50	170202	D	Y
Sale Items (Deleted Stock)	0.50	0.50	170203	D	Y
Natonal Library - Inter Library Loans	16.50	16.50	170204	D	Y
Inter Library Loans (charging libraries only)	6.00	6.00	170204	D	Y
Postage	10.00	10.00	170204	D	Y
Replacement Library Cards each	2.00	2.00	170201	D	Y
Visitor Membership (if not current other library member)	20.00	20.00	170201	D	Y
Earphones	2.00	2.00	170201	D	Y
Photograph for Publication	30.00	30.00	170201	D	Y
Photographs	10.00	10.00	170201	D	Y
Digital Photographs	10.00	10.00	170201	D	Y
<i>Cleaning / Security Deposit - to be refunded when the room and facilities are left in a clean and tidy state with no damage.</i>					
MP Room Cleaning / Security Deposit - private function with alcohol	880.00	n/a	170205	D	Y
MP Room Cleaning / Security Deposit - public function with alcohol	550.00	n/a	170205	D	Y
MP Room Cleaning / Security Deposit - with no alcohol	220.00	n/a	170205	D	Y
Multipurpose Room Hire - commercial per day	180.00	n/a	170205	D	Y
Multipurpose Room Hire - commercial half day	100.00	n/a	170205	D	Y
Multipurpose Room Hire - not for profit per day	90.00	n/a	170205	D	Y
Multipurpose Room Hire - not for profit half day	50.00	n/a	170205	D	Y
Business Incubator - 3 month lease - Bond	400.00	n/a	170205	D	Y
Business Incubator - 3 month lease - per week	100.00	n/a	170205	D	Y
Business Incubator - Casual Rate - commercial per day	60.00	n/a	170205	D	Y
Business Incubator - Casual Rate - not for profit per day	30.00	n/a	170205	D	Y
Plaza Business Bookable Room - per week	80.00	n/a	170205	D	Y
Plaza Business Bookable Room - per day	25.00	n/a	170205	D	Y
Plaza Business Bookable Room - if not in use, study only	0.00	n/a	170205	D	Y
Internal Community Bookable Room - commercial per day	25.00	n/a	170205	D	Y
Internal Community Bookable Room - community per day	0.00	n/a	170205	D	Y
MAPS					
Sale of Rural Property Maps - copy fee only	9.00	9.00	110006	D	Y
ORANA LIVING					
Day Access Options (DAO) - per day	7.50	7.50	500502	A	N
Client Admin fee - per week	65.00	65.00	500101	A	N
Travel charged to clients - per km	0.78	0.78	500103	E	Y
<i>** Other costs apply to clients to aid in the independent living style and these are dependant on client and the house they are living in.</i>					

Description of Fees and Charges	2024-25 \$	2023-24 \$	Income Number	Fee Type	GST (Y/N)
PLAN PRINTING					
General plan printing from Plotter (soft copy required)	9.00	9.00	110006	D	Y
PLANT HIRE RATES					
Price on Application				C	Y
RATES ENQUIRIES					
Sales register - per page	1.20	1.20	110006	D	N
Copy of rate notice	0.00	0.00	110006	D	N
Instalment notice	0.00	0.00	110006	D	N
Water account	0.00	0.00	110006	D	N
Sundry debtor invoice	0.00	0.00	110006	D	N
Valuation search	0.00	0.00	110006	D	N
Valuation listings	185.00	185.00	110006	D	N
Inspection of Notices of Sale	7.00	7.00	110006	D	N
Interest on overdue rates	0.08	0.08	280302	A	N
<i>NB: This rate is subject to change pending notification from Department Local Government</i>					
Legal fees - as set out by Court House	at cost	at cost	110006	E	N
Extract from Valuation Books (eg Crown Land Titles)	0.00	0.00	110006	D	N
Valuation or Ownership Enquiry (written advice)	0.00	0.00	110006	D	N
Title Search	25.00	25.00	110006	D	N
DP Map	25.00	25.00	110006	D	N
ROADS - ENGINEERING INSPECTION					
This fee is applicable when work is conducted within the road reserve by organisations or persons other than Council staff.					
Per inspection	160.00	160.00	191901	E	N
ROADS - WORKS IN ROAD RESERVE PERMIT					
This fee is applicable when work is conducted within the road reserve by organisations or persons other than Council staff.					
Per Application	61.00	58.00	191901	E	N
ROADS - PAVEMENT RESTORATION					
This fee is for restoration of Councils road pavement after work being conducted by organisations or persons other than Council staff.					
Gilgandra - gravel pavement, bitumen seal - per m2	245.00	245.00	191901	E	N
Minimum Fee	1,353.00	1,353.00	191901	E	Y
Outside Town Limits - gravel pavement, bitumen seal	by quote	by quote	191901	E	Y
ROADS - PUBLIC					
Swing or hoist goods across or over any part of a public road by means of a lift, hoist or tackle projecting over the footway.			191901	E	N
Erect an advertising structure over a public road, or exposed (whether for sale or otherwise) any article in or on or so as to overhang any part of the road our outside a shop windor or doorway abutting the road, or hang an article beneath an awning over the road.			191901	E	N
Extend a balcony, awning, sunblind, canopy, sun louvre or similar structure or an essential service pipe beyond a road alignment			191901	E	N

Description of Fees and Charges	2024-25 \$	2023-24 \$	Income Number	Fee Type	GST (Y/N)
SEWERAGE					
Connection fee - Gilgandra	383.00	366.00	400032	E	N
Installation of a New Sewer Junction					
less than 3 m deep	3,122.00	2,981.00	400032	E	Y
3 m - 4 m deep	3,483.00	3,326.00	400032	E	Y
greater than 4 m deep	4,444.00	4,244.00	400032	E	Y
Liquid Trade Waste					
Application for Approval to Discharge Trade Waste					
Concurrence Classification A	301.00	287.00	400011	E	N
Concurrence Classification B	301.00	287.00	400011	E	N
Concurrence Classification C	412.00	393.00	400011	E	N
Concurrence Classification S	412.00	393.00	400011	E	N
Annual Trade Waste Fee					
Category 1 Discharger per year	95.00	90.00	400011	E	N
Category 2 & 2S Discharger per year	188.00	179.00	400011	E	N
Category 3 Discharger per year	629.00	600.00	400011	E	N
Reinspection Fee					
Per Reinspection	87.00	83.00	400011	E	N
Trade Waste Usage Charge (per kl)					
Category 1 Discharger with appropriate pre treatment	0.00	0.00	400011	E	N
Category 1 Discharger without appropriate pre treatment	1.83	1.75	400011	E	N
Category 2 Discharger with appropriate pre treatment	1.83	1.75	400011	E	N
Category 2 Discharger without appropriate pre treatment	16.75	16.00	400011	E	N
Category 2S - see Tankered Trade Waste Charges below					
Category 3 - see Excess Mass Charges below					
Food Waste Disposal Charge					
Food Waste Disposal Charge - per bed	30.36	29.00	400011	E	N
Excess Mass Charges per kilogram					
Charges apply for large / industrial dischargers (charging Category 3) for all wastes that exceed concentration of pollutants in domestic sewage. Formula applies with pollutant rates of charges per kg.					
Aluminium	0.79	0.75	400011	E	N
Ammonia (asN)	2.36	2.25	400011	E	N
Arsenic	79.00	75.45	400011	E	N
Barium	39.52	37.75	400011	E	N
Biochemical Oxygen Demand (BOD)	0.79	0.75	400011	E	N
Boron	0.79	0.75	400011	E	N
Bromine	15.71	15.00	400011	E	N
Cadmium	365.40	349.00	400011	E	N
Chloride	39.52	37.75	400011	E	N
Chlorinated Hydrocarbons	1,579.92	1,509.00	400011	E	N
Chlorinated Phenolics	1.62	1.55	400011	E	N
Chlorine	26.18	25.00	400011	E	N
Chromium	15.97	15.25	400011	E	N
Cobalt	15.97	15.25	400011	E	N
Copper	79.00	75.45	400011	E	N
Cyanide	3.93	3.75	400011	E	N
Fluoride	1.62	1.55	400011	E	N
Formaldehyde	1.41	1.35	400011	E	N
Herbicides / Defoliants	790.49	755.00	400011	E	N
Iron	1.62	1.55	400011	E	N
Lead	39.52	37.75	400011	E	N
Lithium	7.90	7.55	400011	E	N
Manganese	7.90	7.55	400011	E	N
Mercaptans	79.05	75.50	400011	E	N
Mercury	2,633.21	2,515.00	400011	E	N

Description of Fees and Charges	2024-25 \$	2023-24 \$	Income Number	Fee Type	GST (Y/N)
Methylene Blue Active Substances (MBAS)	0.79	0.75	400011	E	N
Molybdenum	0.79	0.75	400011	E	N
Nickel	26.18	25.00	400011	E	N
Nitrogen (as TKN - Total Kjeldahl Nitrogen)	0.21	0.20	400011	E	N
Organoarsenic Compounds	790.49	755.00	400011	E	N
Pesticides General (excludes organochlorines and organophosphates)	790.49	755.00	400011	E	N
Petroleum Hydrocarbons (non-flammable)	2.62	2.50	400011	E	N
Phenolic Compounds (non-chlorinated)	7.90	7.55	400011	E	N
Phosphorous (Total P)	1.62	1.55	400011	E	N
Polynuclear Aromatic Hydrocarbons (PAHs)	16.07	15.35	400011	E	N
Selenium	55.49	53.00	400011	E	N
Silver	1.47	1.40	400011	E	N
Sulphate (SO ₄)	0.16	0.15	400011	E	N
Sulphide	1.62	1.55	400011	E	N
Supphite	1.73	1.65	400011	E	N
Suspended Solids (SS)	1.05	1.00	400011	E	N
Thiosulphate	0.26	0.25	400011	E	N
Tin	7.90	7.55	400011	E	N
Total Dissolved Solids (TDS)	0.06	0.06	400011	E	N
Uranium	7.90	7.55	400011	E	N
Zinc	16.07	15.35	400011	E	N
Non Compliance Charges					
Non compliance pH charge					
Value of coefficient K in equation of TW Policy	0.42	0.40	400011	E	N
Non Compliance Excess Mass Charges - per kg					
Applied when discharge qualities fail to comply with approved concentration limits of substances specified in approval conditions. Formula applies with pollutant rates of charges per kg (calculated using formula).					
Tankered Waste Charges (Charging Category 2S)					
Chemical Toilet per kg	17.80	17.00	400011	E	N
Septic Tank and Pan Waste per kg	2.36	2.25	400011	E	N
Effluent Septage per kg	23.40	22.35	400011	E	N
DISCONNECTION OF PREMISES FROM SEWERAGE					
Per premises, to property line	378.00	361.00	400011	E	Y
SEWERAGE (ON-SITE) DISPOSAL SYSTEMS					
Application to install	111.00	106.00	400032	E	N
plus cost of installation					
Inspection/re-inspection of primary system	111.00	106.00	400032	E	N
Inspection/re-inspection of each additional system	111.00	106.00	400032	E	N
SPORTING FIELDS					
Cricket Club	4,827.00	4,610.00	170701	C	Y
Touch Football	639.00	610.00	170701	C	Y
Rugby Union	2,079.00	1,985.00	170701	C	Y
Rugby League	3,120.00	2,980.00	170701	C	Y
Casual Hirers - per day	121.00	115.00	170701	C	Y
<i>must have \$10 million public liability</i>					
Saturday/Sunday					
<i>Determined by Council on recommendation of Sports Council</i>					
Junior and School Sports	0.00	0.00		C	Y
Travelling Shows					
Bond	885.00	845.00	170701	C	N
Small Circus	251.00	240.00	170701	C	N
Large Circus	482.00	460.00	170701	C	N
<i>must have \$10 million public liability</i>					
Lighting					
McGrane Oval					
Regular Hirers - per hour	35.00	33.00	170701	C	Y

Description of Fees and Charges	2024-25 \$	2023-24 \$	Income Number	Fee Type	GST (Y/N)
Casual Hirers - per hour	45.00	41.00	170701	C	Y
Junior League & Hockey Ovals					
Regular Hirers - per oval per hour	8.00	7.00	170701	C	Y
Casual Hirers - per oval per hour	12.00	10.00	170701	C	Y
Casual Hirers - two ovals per hour	20.00	16.00	170701	C	Y
Portable Grandstands					
Adjoining Councils - per grandstand	275.00	275.00	170701	C	Y
Private Individuals subject to approval by Sports Council and evidence of	345.00	345.00	170701	C	Y
STREET TRADING					
Busking					
Application fee	Nil	Nil	130101	C	N
Footpath Dining					
Application fee	110.00	110.00	130101	C	Y
Annual rental fee per setting per year	Nil	Nil		C	Y
Security deposit (once only fee)	0.00	0.00	130101	C	N
Merchandise and Signage Display					
Application fee	110.00	110.00	130101	C	N
Annual rental fee	Nil	Nil	130101	C	N
Street Vending Stalls					
Application fee	110.00	110.00	130101	C	N
Annual rental fee	Nil	Nil	130101	C	N
Street Vending Vehicles					
Subject to a Local Activity Approval	110.00	110.00	130101	C	N
Ticket Selling and Public Collections					
Application fee	Nil	Nil	130101	C	N
SWIMMING POOL ACT					
Pool Posters	25.00	25.00	170601	E	Y
SWIMMING POOL ENTRANCE FEES					
Single Entry	3.00	3.00	170601	E	Y
Single Entry as part of school program	1.00	1.00	170601	E	Y
Single Entry during summer school holidays program	1.00	1.00	170601	E	Y
Season ticket - Single	110.00	110.00	170601	E	Y
Season ticket - Family (as per medicare card)	210.00	210.00	170601	E	Y
Half Season ticket - Single	68.00	68.00	170601	E	Y
Half Season ticket - Family (as per medicare card)	110.00	110.00	170601	E	Y
TENDER/QUOTATION DOCUMENTS					
Electronic copy	0.00	0.00		E	Y
Hard copy - set on a case by case basis dependant on volume of paperwork	POA	POA	110006	E	Y
TREE INSPECTION					
Inspection for removal	168.00	160.00	110103	E	Y
WASTE DISPOSAL					
WASTE MANAGEMENT - TIPPING FEES					
Green Waste (Lawn clippings, tree prunings, straw)					
Clean	0.00	0.00		E	Y
Contaminated - per cubic metre	50.00	50.00	140305	E	Y
Fill (eg soil, clay, loam)					
Clean	0.00	0.00		E	Y
Contaminated (concrete, bricks, steel etc) - per cubic metre	50.00	50.00	140305	E	Y
Residential Waste & Non Hazardous Commercial/Industrial Waste					
Sorted recyclables	0.00	0.00			
240L bin or equivalent (shire residents only)	0.00	0.00			
240L bin or equivalent (non shire residents)	20.00	15.00	140305	E	Y
Unsorted ute or box trailer - no cage	20.00	15.00	140305	E	Y
Unsorted for quantities greater than a box trailer - per cubic metre	40.00	40.00	140305	E	Y
Car bodies	0.00	0.00		E	Y
Matresses (any size)	30.00	30.00	140305	E	Y
Commercial / Industrial Solid Non Hazardous Waste					
Sorted recyclables	0.00	0.00	140305	E	Y

Description of Fees and Charges	2024-25 \$	2023-24 \$	Income Number	Fee Type	GST (Y/N)
Unsorted ute or box trailer - per cubic metre (landfill)	20.00	20.00	140305	E	Y
Unsorted for quantities greater than a box trailer - per cubic metre	40.00	40.00	140305	E	Y
Car bodies	0.00	0.00	140305	E	Y
Unclean Silo Bags	150.00	150.00	140305	E	Y
Clean Silo Bags (suitable for recycling)	0.00	0.00	140305	E	Y
Metal					
scrap metal	0.00	0.00			
white goods 200L steel	0.00	0.00			
drums (clean)	0.00	0.00			
Fencing Wire					
clean	0.00	0.00			
Contaminated - per cubic metre	40.00	40.00	140305	E	Y
E - Waste					
TVs, computer monitors, printers, etc	0.00	0.00			
Chemical Drums					
Plastic and steel drums through Drum Muster	0.00	0.00			
Plastic and steel drums to landfill (per drum)	5.00	5.00	140305	E	Y
Demolition & Building Material Waste					
Sorted	0.00	0.00			
Bulk demolition unsorted - per cubic metre	50.00	50.00	140305	E	Y
Concrete (brick size) - per cubic metre	20.00	20.00			
Concrete (larger than brick size) - per cubic metre	50.00	40.00	140305	E	Y
Hazardous Waste					
Bonded Asbestos less than cubic metre (conditions apply)	100.00	100.00	140305	E	Y
Bonded Asbestos bulk per cubic metre (conditions apply)	250.00	250.00	140305	E	Y
NOTE: no other hazardous waste accepted					
Disposal of dead animals					
Horse, cow, bull or bullock - each	100.00	100.00	140305	E	Y
Calf or foal - each	50.00	50.00	140305	E	Y
Sheep, goat, pig or kangaroo - each	20.00	20.00	140305	E	Y
Dog or cat - each	10.00	10.00	140305	E	Y
Offal - minimum fee	10.00	10.00	140305	E	Y
Offal - per cubic metre	20.00	20.00	140305	E	Y
Water Tanks					
Clean - Iron	0.00	0.00			
Clean - plastic and fibre glass	40.00	40.00	140305	E	Y
Lined with concrete or other material	40.00	40.00	140305	E	Y
Tyres - per tyre					
Bike Tyres	2.00	2.00	140305	E	Y
Car Tyres	10.00	6.00	140305	E	Y
Car Tyres with Rim	12.00	12.00	140305	E	Y
4WD Tyres	10.00	10.00	140305	E	Y
4WD Tyres with Rim	14.00	14.00	140305	E	Y
Truck Tyres	20.00	20.00	140305	E	Y
Truck Tyres with Rim	35.00	35.00	140305	E	Y
Super Singles	35.00	35.00	140305	E	Y
Tractor Tyres (front)	60.00	60.00	140305	E	Y
Tractor Tyres (rear)	80.00	80.00	140305	E	Y
Tractor Tyres with Rim	120.00	120.00	140305	E	Y
Mining Tyres are not accepted					
Shredded Tyres per tonne	375.00	375.00	140305	E	Y
Other Waste					
Motor Oil & cooking oil	0.00	0.00	140305	E	Y
Batteries	0.00	0.00	140305	E	Y
Solar Panels (residential)	35.00	35.00	140305	E	Y
Solar Panels (commercial)	POA	POA	140305	E	Y
Replacement Yellow Recycling Bin	90.00	90.00	140305	E	Y
* For all waste charges listed above, should the waste be from outside Gilgandra Shire, the cost is to be doubled.					
* Council reserves the right to refuse entry to the Gilgandra Waste Facility.					

Description of Fees and Charges	2023-24 \$	2022-23 \$	Income Number	Fee Type	GST (Y/N)
WATER SUPPLY					
Gilgandra					
Connections 20mm including meter (standard)	701.00	701.00	300032	E	Y
25 mm including meter	728.00	728.00	300032	E	Y
32mm including meter	1,019.00	1,019.00	300032	E	Y
40mm including meter	1,358.00	1,358.00	300032	E	Y
50mm including meter	3,045.00	3,045.00	300032	E	Y
Tooraweenah					
Connections 20mm including meter	842.00	842.00	300032	E	Y
Water meter reading fee (Gilgandra)	35.00	35.00	300031	E	Y
Water meter reading fee (Tooraweenah)	106.00	106.00	300031	E	Y
Water meter re-reading fee (Gilgandra)	48.00	48.00	300031	E	Y
Water meter re-reading fee (Tooraweenah)	142.00	142.00	300031	E	Y
<i>Above fees are on request of the customer, must be paid in advance and are refunded if Councils error.</i>					
Disconnection of Meter - Gilgandra	372.00	372.00	300031	E	Y
Disconnection of Meter - Tooraweenah	512.00	512.00	300031	E	Y
Replacement of Meter Damaged by Property Owner					
- Gilgandra	165.00	165.00	300031	E	Y
- Tooraweenah	306.00	306.00	300031	E	Y
Drinking Water from Bulk Filling Station					
Purchase of an access key & button. These devices are unique to each user, the person recorded as being issued with the device is responsible for the water usage fees.	43.00	43.00	300031	E	Y
Water Usage Fee per kilolitre.	2.60	2.60	300031	E	N
<i>Note: the above fees will be administered by either accounts or prepaid arrangements.</i>					
Fire Flow Test - Gilgandra	223.00	223.00	300031	E	Y
YOUTH SERVICES BUS					
Per Day plus fuel	132.00	132.00	150201	C	Y





GILGANDRA
SHIRE COUNCIL

Live > Enjoy > Grow



GILGANDRA
REGION

15 Warren Road,
GILGANDRA, NSW 2357
P: (02) 6817 8800
www.gilgandra.nsw.gov.au