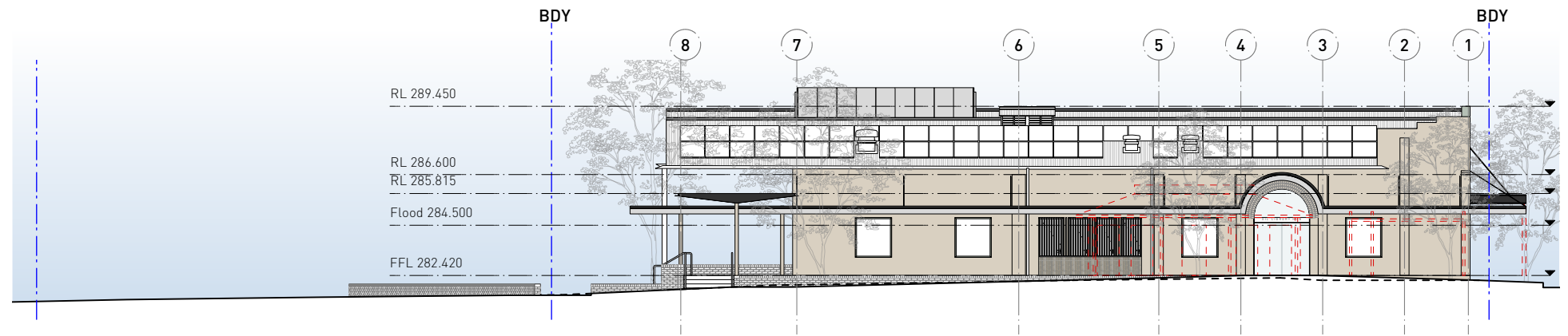
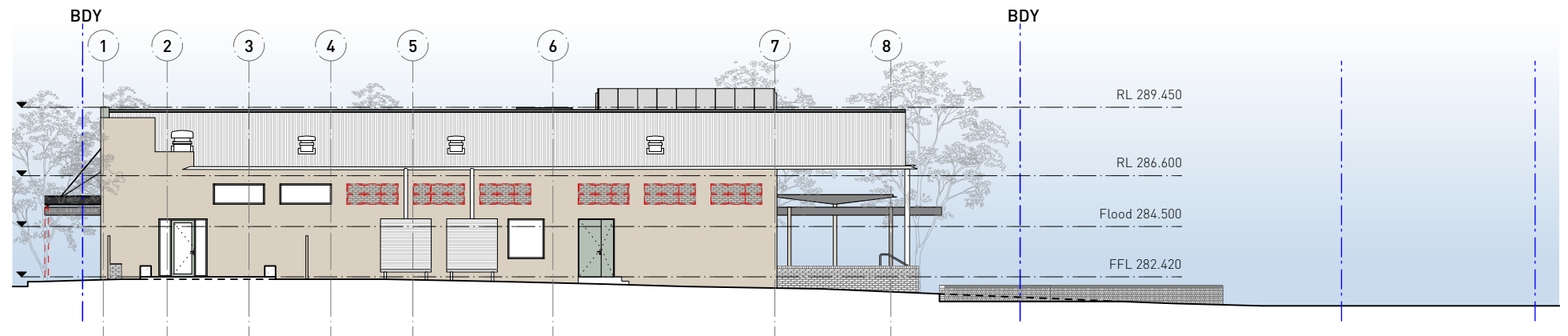


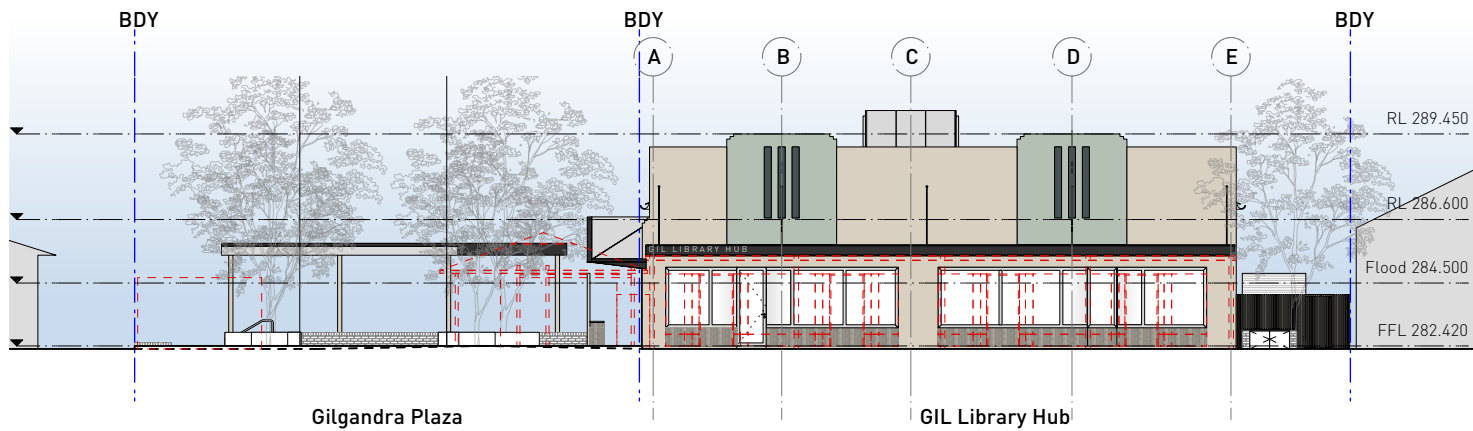
1 Site Plan
DA01-12 Scale: 1:500



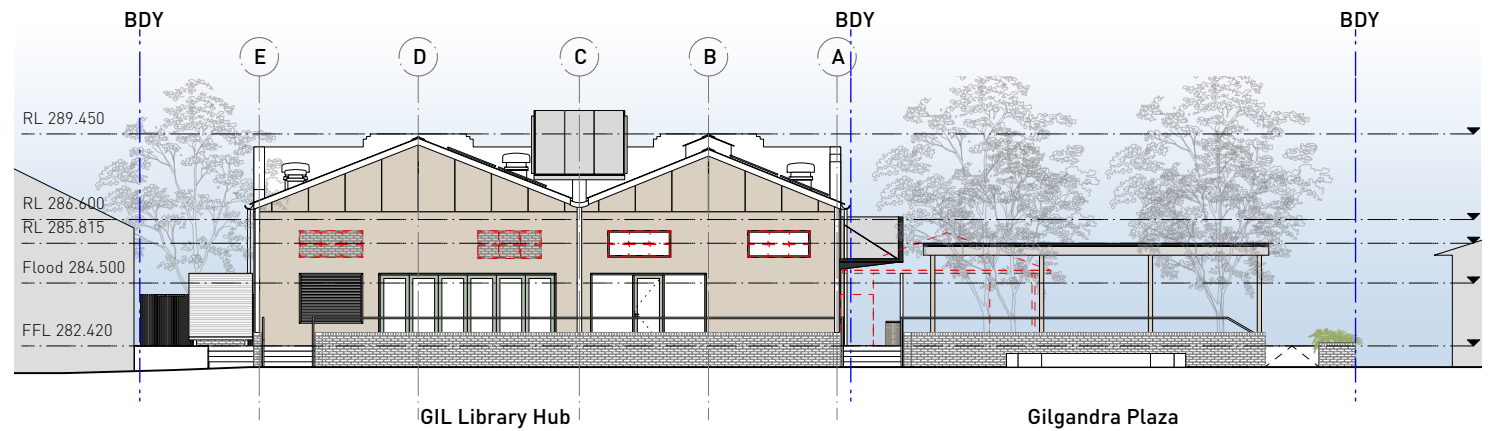
2 North Elevation
DA01-12 Scale: 1:250



3 South Elevation
DA01-12 Scale: 1:250



4 West Elevation
DA01-12 Scale: 1:250



5 East Elevation
DA01-12 Scale: 1:250

DUNN & HILLAM
ARCHITECTS

Workshop 1 Pty Ltd
t/a Dunn & Hillam Architects
ACN 098 309 196 ABN 17 098 309 196
Nominated architect Ashley Dunn NSW ARB No. 7547

This drawing, the information and design
in it are copyright to Workshop 1 Pty Ltd.

Revision	Note

33 Salisbury St, Botany NSW 2019
T: +61 2 9316 7715 E: admin@dunnhillam.com.au W: dunnhillam.com.au

Consultants	Notes
Surveyor - Western Survey Pty Ltd contact ph: 0499 080 997	<p>Notes</p> <ol style="list-style-type: none"> all dimensions in mm. do not scale from drawing. this drawing has been prepared for Development Approval purposes only and is not to be used for tender or construction. clarification to be sought from the architect in the event of any discrepancies in the documentation or if further information is required.
Structural Engineer - John Carrick Pty Ltd contact ph: 02 9698 2961	
Services Engineer - JHA contact ph: 02 9437 1000	
BCA/Access - Design Confidence contact ph: 02 8399 3707	
Traffic - Lyle Marshall & Partners contact ph: 02 9436 0086	
Quantity Surveyor - Altus Group contact ph: 02 9283 7311	
Landscape Architect - Somewhere contact ph: 0428 695 706	

Client	Gilgandra Shire Council		
Project	GIL Library Hub and Plaza 30-34 Miller Street, Gilgandra		
Issue	Development Approval		
Date	Tue, 15 Jun 2021	Job No.	20_304
Scale	1:200 @A3	Drawn	GY
Drawing	Notification Plan	Rev.	
Dwg No.	DA01-12	Check	AD