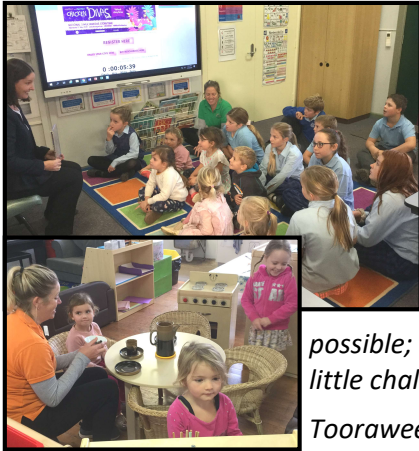


Toora Bungles



Volume 26 Issue 9
June 2020

Tooraweenah Preschool – “Developing wings of Independence”



Hello everyone! My name is Marie Jacobsen, I am new to Tooraweenah and I am also the new Nominated Supervisor at Tooraweenah Preschool. I am looking forward to meeting more people in the community when possible; Covid-19 has made that a little challenging!

Tooraweenah are extremely lucky to have such a wonderful preschool, and I would like to thank you the families, committee and Tooraweenah Public School staff for their friendship and warm welcome. I am very excited about living and working in Tooraweenah.

To the delight of the children at Tooraweenah Preschool, they have had a lovely time over recent weeks rediscovering some fabulous learning experiences, games and activities, both inside and outside. There has been a lot of fun challenging ourselves outside at the obstacle courses set up; balancing on long and short bouncing boards and tricky balance beams, climbing and crawling through hoops and the tunnel, as well as playing happily and cooperatively together on our fixed play equipment and in the cubby house. We now have the ‘kitchen sink’ at the sandpit and a revamped sandpit equipment shelf that is out each day for the children to use; they enjoy selecting and creating with whatever items they choose.

We’ve also enjoyed having the large tubs of water in the sandpit; for the seashells and for cooking. Did you know that we have the most amazing restaurant in the country at

Tooraweenah Preschool?

We have also been fortunate to purchase new equipment and play resources at preschool recently. A special thank you to the 2020 Management Committee for their support and assistance.

The children love playing dramatically at our new home corner area, with a new sink, oven, fridge and kitchen dresser, as well as table and 4 lovely wicker chairs. We have a new puzzle shelf (and fabulous new puzzles to challenge us too!), a new bookshelf, and seating: a child-sized 2 seater lounge with two matching arm chairs to curl up on with a good book. We’re also getting a new large carpet mat for our games, dancing and other activities.

The children have learnt several new songs and enjoy singing to Miss Marie playing the piano. They have kept busy discovering different items from nature and exploring and investigating concepts, including science concepts, at the curiosity shelf. The ‘surprise box’ is always received with awe and wonder and lots of great problem solving and thinking has been occurring at different activities, including checking out items on the “Discovery Dish”, playing lotto games and enjoying concept activities and games.

We have been on some amazing learning journey’s so far this term filled with fun, laughter and amazing discoveries and adventures, and we can’t wait for what else is to come at Tooraweenah Preschool .

*Marie Jacobsen
Nominated
Supervisor*



Mountainside Beauty
Waxing, Massage, Facial,
Tinting, Mani/Pedi Skin care,
Gift Vouchers.
Tooraweenah NSW
0439 470 549
Appointments via phone
or Facebook
@ Mountainside Beauty

**TOORAWEEENAH
TRADING CO**
Your CRT Store in Tooraweenah
Post Office and Newsagency
Contact Lester
for all your agricultural needs
Phone: 6848 1011 or 6848 1127
Fax: 6848 1197



Christie & Hood
Auctioneers
Stock and Station Agents
Real Estate
For all your livestock and property
requirements contact our:
Gilgandra Office: 6847 2033
Dubbo Office: 6884 3800

After Hours

| | |
|-----------------|--------------|
| Paul 6847 2741 | 0429 472 741 |
| Tim 6889 6109 | 0429 843 804 |
| Colin 6884 3802 | 0429 843 802 |



Read the Toora Bungles at: <http://www.gilgandra.nsw.gov.au/Live/Your-Community>

Mental Health, Drought And COVID 19 Please Reach Out For Support

Farmer Assistance Hotline 132 316

NSW Government Drought Hub

www.droughthub.nsw.gov.au

Rural Assistance Authority (RAA)

Loans at a Glance

NSW RAA: 1800 678 593

NSW Drought Transport Subsidies

www.agriculture.gov.au

For Mental Health Information and support:

Centre for Rural & Remote Mental Health and RAMHP— Check out their web site

W: www.ramph.com.au to find the local RAMHP Coordinator

E: ramph@newcastle.edu.au

Visit www.crrmh.com.au click on the link to the Drought Support

Home Page

You Got This Mate

www.yougotthismate.com.au

The \$3,000 per household can consist of up to \$2,000 in cash and \$1,000 in vouchers.

Eligible households should reach out to these organisations directly to seek financial support

The Salvation Army

24 hour hotline: 1300 551 030

Website: salvos.org.au/drought

St Vincent de Paul

Hotline: 13 18 12 Website:

vinnies.org.au

Rural Financial Counselling Service

NSW Central Region

For FREE impartial and confidential

financial counselling to assist farmers, fishers & agriculture dependent small businesses.

FREE Call: **1800 940 404**

Email: ceo@rfcscr.com.au

Website: www.rfcscr.com.au

COVID 19

Important contacts for accurate and up to date information go to;

Federal Government:

www.australia.gov.au

NSW State Government:

<https://preview.nsw.gov.au/covid-19>

Helpline for Businesses Impacted

Tel: 13 28 46

Mountain Side Beauty — COVID 19 Plan — Open for Business

Finally, some exciting news, as of the 1st June 2020 Beauty Salons in NSW can open, having in place COVID safe plans to ensure all clients health is put first and to keep everyone healthy. What is our new normal?

The new normal for Mountainside Beauty will be implementing a COVID safe plan, making sure clients are not showing any symptoms of flu or feeling unwell, deep cleaning between each client and record keeping of day to day clients, cleaning, and sterilisation.

Bookings are now essential, no walk ins are welcome due to new regulations, if you are showing any

symptoms you will be asked not to book an appointment, or you will be asked to leave the salon.

When entering and leaving the salon you must now use the hand sanitiser that is available.

We are offering contactless pick up and delivery of retail products and over the phone consultations.

We are taking bookings for the 1st June and beyond, please be patient with us as we try our best to fit you all in.

Adjusting to the new normal will take time, this being the case, we will be offering limited appointment times

until the 6th June to ensure we meet all regulations and policies to keep everyone safe.

Please work with us to ensure we keep everyone healthy and safe.

If you have any questions or would like any information please contact us.

We look forward to seeing all our lovely clients again and meeting many new clients.

Thank you. *Emma Hutchison*
Salon Owner & Founder

Email: mountainsidebeauty@hotmail.com

Phone: 0439470549

Facebook

@ Mountainside Beauty



New website launched!

www.yougotthismate.com.au

It provides tips and info to help rural men reach their best possible mental health and info you need to help you be the best possible support for a loved one who is experiencing tough times!

Linking rural people to the help they need

WWW.RAMHP.COM.AU

Presbyterian Church Tooraweenah



Reverend Peter Tamsett
6847 2036

Around The Traps 😊

Tooraweenah LPO

Currently with the COVID 19 virus, the Post Office is operating normal hours, we will try to maintain normal service, but in the eventuality we have to self-isolate the business will be closed. Please observe good hygiene and social distancing and hopefully we all will remain well and virus free in Tooraweenah.

The rainfall for Tooraweenah for May 2020 was 15mm over 4 days, with a year to date total of 411.6mm over 36 days.

Please ensure you use your correct mailing address to speed up sorting and delivery, make sure your mail has been correctly addressed and you put the appropriate amount of postage on larger letters. Due to the extra demand on parcel deliveries, delays are currently being experienced from time to time. Priority and express services are currently suspended.

Postage rates have changed, a standard letter is now \$1.10

A reminder that the Tooraweenah and Tondeburine Post Code is 2817

Pub Community BBQ's

The BBQs are currently not operating during the COVID 19 pandemic.

Lions Clothing Bin

Residents who take advantage of the Lions Clothing bin are reminded that it is for clean clothing only. If you have warm blankets or Doonas they are required with the cooler weather approaching.

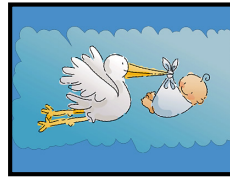
Toora Lions club.

Currently the club is in recess and we will advise when the situation changes.

Support the club that supports your town.

It's A Baby Girl!

Congratulations to Scott & Jen Smith of Combalonga on the safe arrival of their baby daughter Hannah Paige born on the 24th April 2020. A sister to Eliana. Proud and beaming grandparents, Alan & Maree Smith and Gwen & Kevin O'Driscoll.



Other New Born Babies?



We know there are other very special new little ones in the Tooraweenah district. We would

love to receive their details and/or a picture to share. Please Email gundair1@bigpond.com. Ed

COVID 19 Help & Support

Some very important contacts for accurate and up to date information please go to;

Federal Government:

www.australia.gov.au

Coronavirus Help Line;

FREE Call 1800 020 080 or

If you have symptoms

Call Health Direct

FREE Call 1800 022 222

NSW State Government:

<https://preview.nsw.gov.au/covid-19>

Help Line for Businesses Impacted

Tel: 13 28 46

Tom Quilty National Championship

The Tooraweenah Tom Quilty 2021 has now been postponed to July 2022.



This is because Western Australia has been cancelled for 2020 (this year) and then rescheduled to 2021.

This will give our local team a little more time to prepare. *Sonia Bonham*

Birthday Congratulations Don



Happy birthday to Don Weston who celebrated his 80th

on Thursday May 28th .

A special celebration with family and close friends will happen later in the year. Something to look forward to.

Walking Track to the Viewing Platform

Looking to take in a little fresh air and exercise, why not try the Walking Track from the Village up to the Viewing Platform. The views of the Warrumbungle Mountains are spectacular. Let us know the degree of difficulty and how you enjoyed the experience.

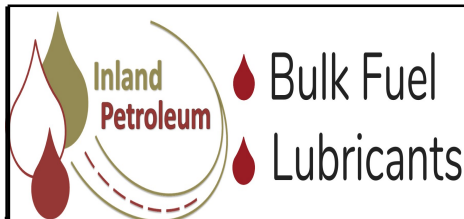
A Special Welcome to Marie Jacobsen

A very special welcome to Marie, who is the new nominated Supervisor for the Tooraweenah Preschool. We all look forward to meeting you soon and we will continue catching up with all the Preschool happenings in the Bungles each month.

Anglican Church Tooraweenah

Grahame Yager
0428 866 525

Gulargambone
Jeff Tym
0427 223 182



Servo's across NSW

Call- 1800 638 700

'More than just fuel'

EMU LOGIC

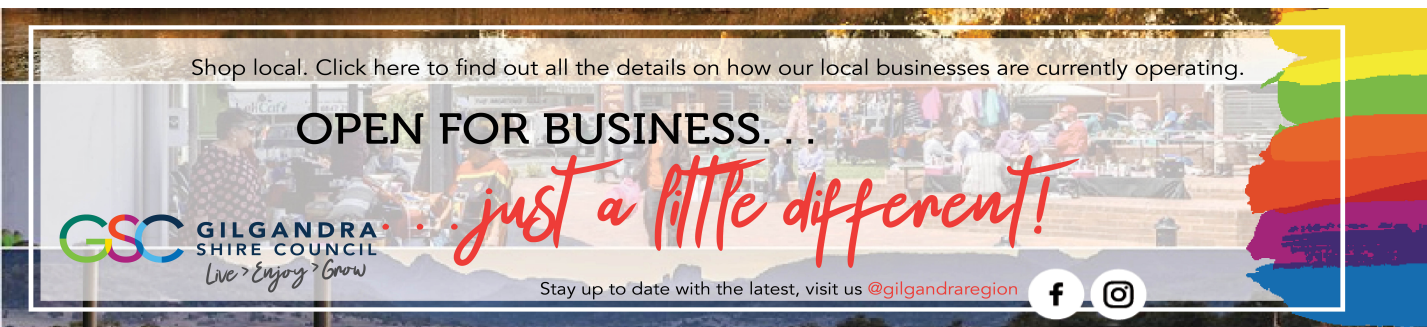
Emu oil for sore joints and skin problems, for you and your dog

Products available from
Gilgandra Coo-ee Heritage Centre
Coona Rural and On-Farm

Visit us at:
www.emulogic.com.au
or on Facebook: emulogic



Gilgandra Shire Council—General Manager Reports



With many restrictions from COVID-19 easing as of June 1, we encourage community members to stay up to date with Council facilities by visiting our website

www.gilgandra.nsw.gov.au to see the most recent information.

This month, Council is seeking feedback from the community on a number of key documents and projects. The documents are available in electronic format and can be downloaded from Council’s website: www.gilgandra.nsw.gov.au. Copies will also be available at Service NSW, 20 Miller Street, Gilgandra. Residents, businesses, community groups/ organisations and interested community members are encouraged to view the drafts and provide a written submission to Council expressing your comments, concerns and suggestions. Written submissions, addressed to the General Manager, will be accepted up to 5pm on Monday, 22 June 2020.

Submissions can be made via Council’s website www.gilgandra.nsw.gov.au/Connect/Have-your-say, hand delivered to Council’s Administration

building in Warren Road, forwarded by email council@gilgandra.nsw.gov.au or posted to PO Box 23, Gilgandra.

We are also inviting residents to be part of our fun photography competition. To showcase the beauty of the Gilgandra Region, Council is running this community photography competition celebrating our region, our people, our events and all things that make our region unique. Terms and conditions and details on how to enter are available on Council’s website. Entries close Tuesday, 30 June 2020 so get snapping!

Draft Operational Plan on Exhibition
Council’s 2020/21 Draft Operational Plan is currently on public exhibition. The plan includes drafts:
2020/21 Annual Operational Plan
2020/21 Budget
2020/21 Revenue Policy
2020/21 Fees and Charges

Draft Gilgandra Local Strategic Planning Statement
Council’s draft Local Strategic Plan

(LSPS) is currently on public exhibition.

The draft LSPS sets the framework for Gilgandra Shire’s economic, social and environmental land use needs over the next 20 years, outlining how we can maintain our core community assets and take advantage of new and diverse opportunities for growth.

Coo-ee Heritage Centre Upgrades
Have Your Say on the Coo-ee Heritage Centre (CHC) upgrades. As part of the Gilgandra Cultural Precinct Council will be hosting ZOOM sessions for community consultation and Aboriginal Stakeholder Group on Friday 5, 12 and 19 June. To see what these upgrades include, register for a ZOOM session and to Have Your Say visit www.gilgandra.nsw.gov.au/Connect/Have-your-say. It is planned that the Visitor Information Centre will operate out of the GIL for the duration of the construction period.

David Neeves,
General Manager



Ovarian Cancer Australia

Our vision is to save lives and ensure that no woman with ovarian cancer walks alone.

Help Line: 1300 660 3345
Web: ovariancancer.net.au

Home Visiting
Clinic Visits
Child Immunisations
Breastfeeding Support
Safe sleep and settling

Child Health Checks
Depression and Anxiety
New Parents Groups
Infant Nutrition and Starting Solids
Child Safety Information

NSW Western NSW Local Health District
CHILD AND FAMILY HEALTH NURSING SERVICES Birth to 5 years
Facebook icon and QR code

Due to the current situation Sarah, (Western NSW LHD) will not be doing any clinic until further notice.

Tooraweenah Public School

Return to School

It is wonderful to have all our students back full-time for the first time since the COVID-19 restrictions took effect. We have greatly missed teaching face to face and are very pleased that students have settled back into routines so quickly.

Staffing Update

Mrs Zell is taking leave for the remainder of the Term (Mondays and Fridays) and we would like to welcome Mrs Hutchison, who will be teaching on those days during Term 2. We would like to welcome Daniel Harte, who is working as the General Assistant (GA) in maintaining our school grounds until Dennis is able to resume working on site.

Veggie Gardens



Last Friday saw a very productive day in our Veggie Patch with our



garden beds converted to "Wicking Beds" for water efficiency.



Taylor, Lara and Holly build garden beds with Carl.

Students, together with Wes Leedham and Carl Homesby from the

Warrumbungle Environmental Education Centre began the process of modifying our existing beds and learning about water sustainability in practice. It was a fantastic day, full of practical hands on learning and we look forward to welcoming Wes and Carl back this Friday to finish building the second garden bed.

Positive Behaviour for Learning Celebration

Students enjoyed choosing their activities on the PBL Celebration, with students making slime, watching a movie and enjoying popcorn or playing games.

National Simultaneous Storytime

The National Simultaneous Storytime was a wonderful opportunity for the School and Preschool students to join together and enjoy reading, while joining with children around Australia doing the same.

Did you know that children need to hear 1000 books before they can read themselves?

Reading to children from birth fosters a love of books and reading as well as helping them in their overall language and literacy development.

Tender

The tender process is now live and parents and community members are able to submit tenders via submission forms by Thursday 4 June. Surplus items available via tender are:

- 2005 Cox ride on mower
- Victa mower
- Stihl brushcutter (whipper snipper)
- Daikin reverse cycle split system air conditioning unit
- extra large evaporative air conditioner with ducting
- 4 x used screen doors
- mixed school desks
- small coffee table
- 7 x adult sized vinyl chairs
- 5 x broken chairs
- 1 x tunnel for fixed equipment
- small sheets of corrugated iron

For more photos, details, terms and submission form, refer to the

Tooraweenah Public School website <https://tooraweenah-p.schools.nsw.gov.au/>

Due date: Thursday June 4, 2020

Please email submission form to tooraweenah-p.school@det.nsw.edu.au

Inspections are by appointment only due to COVID-19 restrictions. Social distancing and additional hygiene measures will apply. Anyone who is unwell must not enter the school grounds.

Enquiries: Karen Smith, Principal 02 6848 1073

Transition to School

Tooraweenah Public School's Transition to School program will commence in Term 3 on Monday 27th July and will run for full days on Mondays for all of Term 3 and the first 5 weeks of Term 4.

Information packs will be sent out in the coming weeks to current Tooraweenah Preschoolers who are eligible to start Kindergarten in 2021. Please contact the school if you know of any other children who may like to experience what Tooraweenah Public School has to offer.

Karen Smith

Principal

Tooraweenah Public School

Safe, Respectful Achievers

|w| 02 68481073



Indy Brown investigating, 'weathering'!

Councillors Corner – Cr Brian Mockler Reports!



Councils are indeed fortunate that the Feds are funding, more \$\$\$\$\$ to support delivery of priority local road and community infrastructure projects.

Gilgandra Shire Council has been allocated \$878k. Perhaps our community has ideas and proposals which can be included in priorities and projects to be selected, keeping in mind all works must be completed by 30 June 2021. I encourage suggestions

and submissions to the General Manager and Councillors, so appropriate analysis and recommendations can be considered.

Our May Council meeting adopted Budgets and associated Reports, progression with new Shire signage in line with Council/regional branding and upgrade of Gilgandra Cultural Precinct/Coee Heritage Centre.

In relation to the Drought Communities Program, Council resolved not to proceed with the funding allocation towards the Lucas

Bridge replacement due to time constraints and other grant funding opportunities.

Instead Council will submit applications to allocate the funding towards 12kms gravel re-sheeting, construction new culvert Curban Biddon Rd, kerb & guttering, footpaths, new town and villages signage, CBD activation/events/activities and installation of a new community caravan/traveller “dump point” facility to be located at Tooraweenah Caravan Park.

Tooraweenah CWA



I hope everyone is keeping well and practicing the social distancing measures.

There has been no word about re-opening our rooms and commencing our regular monthly meetings. Macquarie Group held their Executive Meeting on Zoom which worked quite well as we could see each other. The next Group Council Meeting is scheduled for August in the Curban Hall. Please keep an eye out for raffle tickets being sent to branches. Tickets will be drawn during the Group Conference in Wellington in

November. Until next time keep safe
Cath Waller, Publicity Officer.

Sip & Sew

What a talented group of women we have in Tooraweenah and surrounds. It is amazing to see the volume of finished items from patchwork to table runners, clothing and soft furnishings.

Whoever says a group can't operate under these current restrictions is quite wrong. The Sip and Sew Group is thriving, growing and inspiring others. A telephone call, a text, a

photo or even a call to help sort out a problem. All are answered and shared. We welcome any-one who is interested in joining our group. Ring Sue on 0427 359 936 or Beverley Pike 6848 1190 or contact any-one you know who is part of the group.

👉 Diary Dates 2020 😊

*'Take Time out!!
Relax and Enjoy Life!*

Sunday 11th July 2020?
Camp Oven Cook Off

Saturday 17th Oct 2020
Tooraweenah Show

Activities may be subject to change!

**OAKFIELD
KELPIE STUD**

Offering affordable black & tan working kelpie pups for sale.

Strong, Calm & Smart

Karana & AKennedy's bloodlines
The best genetics available

Contact
Brendan Butler 0447481048

**The Little Gecko
Coffee Shop**

16 Aimee Street
Tooraweenah
Tel: 6848 1089

**Hot Drinks
Coffee, Chai Latte, Hot Chocolate**

- ☒ Milk
- ☒ Eggs
- ☒ Dairy
- ☒ Local Bread
- ☒ Fresh meat trays (orders taken)
- ☒ Prepacked cold meats
- ☒ Small selection of groceries

Stuck for dinners?

Frozen lasagne, chicken wings, chips, seafood baskets, party pies, shepherd's pie and more

Explore a range of giftware
keep an eye out for changing hours

**Open Tuesday to Friday 9am to 1pm
Open Saturday—Long Week-end**

*Please respect 1.5m social distancing

Lions Roar



Toora Lions Club is somewhat hamstrung by existing Public Health Orders despite our rural isolation. With social distancing and restrictions on gatherings plans have been shelved to hold an official 41st Changeover that is traditionally held in June. In the world of “virtual reality” we want you to

imagine, Lord Lester,(in all his largest splendour,) bestowing the club’s Charter with gavel and lapel pin upon incoming Presidente, Lady Kathryn Larkin (k/as B1 & B2’s tea pot mum). Lester has been demoted to Secretary and we have Jane Gesell entrenched as our trusty Treasurer. Other positions in our Lions hierarchy will be allocated when we return to some

sort of normality. In the meantime Kathryn and Lester are at the helm of our local community service organisation for the next 12months. As restrictions relax, Toora Lions members are looking forward to getting their teeth into community projects and activities, with suggestions always welcome.

Lion Mock

Rural Assistant Authority \$310 Million Funding Boost!

The new Rural Assistant Authority funding allows existing drought programs to continue providing farmers and businesses with the support and certainty they need to make farm management and business decisions. The package includes: \$116 million to continue the Drought Transport Subsidy until 1 November 2020
Continue to waive all interest charges on the Farm Innovation Fund until 31 December 2020. These interest waivers will also be extended to include the Special Conservation Fund loans from 1 July 2020. These waivers will be automatically applied and are in addition to the interest free

Drought Assistance Loans still on offer. \$99 million to continue waiving of Local Land Services rates, bee site permits, Western Lands lease rent, wild dog fence rates and provide rebates for vehicle registration cost for eligible primary producers; and \$28.5 million to continue existing water licence fee waivers for stock, domestic, general and high security water users.
By extending these programs, cash is being put back into farmers’ pockets at a critical time.
If you have successfully applied for assistance with RAA in the past, you will not be required to lodge another full application.

For more information, call the team at the NSW Rural Assistance Authority on 1800 678 593, or visit the Drought Hub website www.droughthub.nsw.gov.au

Tooraweenah Show Full Update in July Bungles

A decision regarding holding the Annual Show in October is too early to make. Be assured that the Covid-19 Restrictions will be closely monitored

by the Show Committee and you will be kept updated as the date draws near. For further information contact: Secretary Kristy Gale 0429 780323 or 6848 1148 or toorashow@gmail.com



**Mountain View Hotel
Tooraweenah
June 2020**

TRADING HOURS AT THE MOMENT

From June 1st we are able to have up to 50 people in at one time. Please ring and book a table to ensure we can cater for you. Please check our opening hours as we adjust to the new ‘normal’.

**Check out our amazing
drink and bistro specials!**

Our last merchandise order for the next few months will be placed by Friday 5th June so if your wanting anything please ring and order.

**We’re open all June long weekend
for all your needs, so if your planning
on coming in please ring and
book a table.**

Hopefully by July things will be more ‘normal’ and we will have set opening hours. *Ash.*

**Stay well, safe and, connected
with family and friends.**

6848 1017

**Tooraweenah
Community Bus**
offers a door-to-door pick up from 9am to Gilgandra for essential transport, with restrictions returning earlier to Tooraweenah.

Schedule for 2020:
June 9th & 23rd
Always the second and fourth Tuesdays of the month
Please ring to book: 6817 8750

Luke Harvey
Owner/Certified Welder
Mobile Welding and Repairs
On-Site Service, No Job Too Small
Ph 0407 321 672
lmhwelding87@gmail.com

Our services include:
MIG TIG STICK, Air Arc Gouging
General Fabrication, Farm Equipment,
Earth Moving Equipment,
Trailers, Repairs
Call For A Quote Today

**LMH Welding
& Rural Contracting**

Luke Harvey
Owner/Certified Welder
Mobile Welding and Repairs
On-Site Service, No Job Too Small
Ph 0407 321 672
lmhwelding87@gmail.com

Our services include:
MIG TIG STICK, Air Arc Gouging
General Fabrication, Farm Equipment,
Earth Moving Equipment,
Trailers, Repairs
Call For A Quote Today

Community Bank - Gilgandra

Making good things happen

Bendigo Bank

Search Bendigo Bank Gilgandra

Items repaired or replaced using

BASIC MACHINING & WELDING

Simon Blackman

Mobile: 0428 064 555
Home: 02 6848 1149

MENTAL WELLBEING

Depression

It's not a matter of just being tougher or more resilient ... you're in strife and you can be helped

www.beyondblue.org.au or

Phone: 1300 224 636
youthbeyondblue.com
1300 22 4636

Anxiety Disorder Information:
1300 794 992

Mental Health Information
1300 794 991

Mental Health Line

1800 011 511—24 Hour access

Lifeline: 13 11 14

Men's Line Australia
1300 789 978

Kids Help Line
1800 55 1800

Domestic Violence
1800 656 463

Alcohol & Drug Info Service
1800 422 599

Suicide Call Back Service
1300 659 467

BENN JENKIN CONTRACTING

**DISC PLANTING
SPRAYING
HARVESTING**

New equipment, satellite GPS and autosteer technology

Offering you precision and no till planting, creating higher returns and pasture improvement

bennjenkin@hotmail.com

0428 485 314

'Glen Garry' Doorroombah Road
Tooraweenah NSW 2817

Veterinarian

Nadine Allan BVSc Hons

Will visit Tooraweenah second Tuesday each month

Phone 6847 1129
for appointment

Gilgandra Veterinary Clinic
2 Enterprise Drive
GILGANDRA NSW 2827

Mobile:
0427 471 129

FOR HIRE

Cool Room

Contact
Geoff or Bev Pike

6848 1190

RICHARD MURPHY
Ph: (02) 6842 2495

ROBERT WALLER

'Bob's Plant Hire'

Phone
6848 3514
Mobile
0423 281 691

Need contour banks, roads or small dams?

Contact Robert

GAVIN DUFF

CONTRACTOR

For all your building and carpentry needs
Home maintenance and improvements

No job too small
For an obligation free quote please call

AH: 6848 5345 or
0429 317 921

CTC@Tooraweenah

We are CLOSED to the public until further notice

Ph. 6848 1154

Tooraweenah Caravan Park

- *Relaxed Friendly Atmosphere*
 - *Pet Friendly*
- *Powered & Unpowered Sites*
 - *Ensuite Cabins*
 - *Pool*

Resident Owners
Scott & Janelle Quilter
6848 1133